

Badger Butterfly

The e-Newsletter of the Southern Wisconsin Butterfly Association **DECEMBER, 2010**

WEB SITE: <http://www.naba.org/chapters/nabawba/>

1 NEXT SWBA MEETING:

Tuesday, March 1

Meet at 7:00 p.m. in Madison at the [Warner Park Community Recreation Center](#), 1625 Northport Drive.

Program: Butterflies on Stamps

Speaker: Dreux Watermolen, WDNR



Scientists have described approximately 20,000 species of butterflies worldwide, ranging from tiny skippers to large swallowtails. Their brightly colored wings and generally conspicuous, fluttering flight have often captured the imaginations of poets, authors, and other creative types. Artistic depictions of butterflies have appeared in many cultures, including Egyptian

hieroglyphs dating back 3500 years. Today, butterfly-themed artworks abound (some even incorporate real butterflies).

Of particular note is the wide range of postage stamps and related philatelic items that feature these insects. Nations around the world have depicted butterflies on more than 8,800 different stamps! Join us to explore this wonderful diversity of butterflies, both as they occur in nature and as they are depicted on world postage stamps.



Everyone is welcome to attend this free program. The meeting will last from 7:00 p.m. to 8:30 p.m. We will have door prizes, displays, books, handouts and plenty of time afterwards to enjoy snacks and refreshments, and talk with our speaker and other butterfly enthusiasts.

DIRECTIONS: On Madison's north side, from the intersection of Sherman Avenue and Northport Drive (= Hwy 113) go west on Northport Drive for about 1/4 mile, then turn south into Warner Park. Turn immediately right into the Community Center parking lot. When you enter the Community Recreation Center, we will be in the meeting room on the left.

- IN THIS ISSUE:**
1. **NEXT SWBA MEETING ON MARCH 1, 2011.**
 2. **FIELD TRIPS IN 2011.**
 3. **FALL BUTTERFLIES.**
 4. **Fabulous NABA Meeting!!**
 5. **SUPER-ZOOM CAMERAS.**
 6. **TWENTY POISONOUS CATERPILLARS!**



2 SWBA FIELD TRIPS SCHEDULE FOR 2011

Mark your calendars!

Saturday	May 21	Butterflies of Bauer-Brockway Barrens	Mike Reese
Saturday	June 18	Butterflies of Pleasant Valley	Ann Thering
Saturday	June 25	Butterflies of Cherokee Marsh	Kathy Kirk
Saturday	July 2	Madison Butterfly Count	Karl and Dorothy Legler
Monday	July 4	Butterflies and Dragonflies of Swamp Lover's Preserve	Tod Highsmith and Leglers
Sunday	July 16	Pretty Things With Wings at Lakeshore Preserve	Edgar Spalding

Saturday	August 13	Butterflies at Avoca and Lower Wis. Riverway	Mike Reese
Saturday	August 27	Butterflies and Blossoms at Pheasant Branch	Dreux Watermolen
Saturday	September 3	Grasshoppers!	Kathy Kirk
Sunday	September 4	Monarchs	Karl and Dorothy Legler

3 FALL BUTTERFLY SIGHTINGS AT www.wisconsinbutterflies.org TABLE OF BUTTERFLY REPORTS

Mike Reese's butterfly website received a record high 109 reports in September detailing over 7,500 individual butterflies. Sixty-two reports were received in October. The table shows only the most interesting (usually scarce) butterflies that were sighted in September, October (and one sighting in November). The total in the fourth column includes the few records in November.

Bold names are not permanent residents in Wisconsin. They are migrants or immigrants. They come into the state from the south but they cannot survive our winter. Of these, some species (migrants) return south before winter, while others (immigrants) remain here but do not survive our cold weather.

BUTTERFLY	SEPT	OCT	TOTAL REPORTS
Common Buckeye	56	22	78
Fiery Skipper	31	14	45
Milbert's Tortoiseshell	13	11	24
Painted Lady	10	7	18
Little Yellow	7	3	10
Peck's Skipper	8	2	10
Dainty Sulphur	6	3	9
Bronze Copper	6	2	8
Gray Comma	5	2	7
Giant Swallowtail	5	1	6
Compton Tortoiseshell	5	1	6
Common Checkered Skipper	4	1	5
Aphrodite Fritillary	4	0	4
Variegated Fritillary	3	1	4
Gray Hairstreak	2	1	3
Sachem	0	3	3
Wild Indigo Duskywing	2	0	2
Purplish Copper	0	2	2
Checkered White	0	1	1
Sleepy Orange	1	0	1
Tawny-edged Skipper	1	0	1
Delaware Skipper	1	0	1
Karner Blue	1	0	1
Leonard's Skipper	1	0	1
Green Comma	1	0	1
Silver-bordered Fritillary	1	0	1
American Snout	1	0	1
Funereal Duskywing	0	1	1
White M Hairstreak	0	1	1

The **Common Buckeye**, usually an uncommon migrant into Wisconsin, this year saw a large influx into the state. Half of all reports in September included a Buckeye! One third of October reports included Buckeyes. **Fiery Skipper** is usually uncommon but in favorable years it enters the state in large numbers as it did this year.



Common Buckeye

Painted Ladies (migrants) and **Little Yellows** and **Dainty Sulphurs** (immigrants) turned up occasionally. **Giant Swallowtails** were disappointing. We expected a better showing in such an outstanding butterfly year. Several of the extremely rare immigrant, **Sleepy Orange**, were seen on SWBA's Avoca and Lower Wisconsin Riverway Trip in August. The usually rare northern species, **Green Comma**,



White M Hairstreak
Photo by D. Sonnenberg

seemed to turn up in surprising numbers this summer. Was it a population peak or did observers discover some hotspots? Or perhaps both! It will be interesting to see how Green Commas fare next year. The **Funereal Duskywing** was unknown in Wisconsin before 2002. But this was its best year with a total of 6 sightings! The most unusual sighting was a ultra rare **White M Hairstreak** seen in Marquette Co. on Oct. 12. It was thought to be a worn Gray Hairstreak, but Mike Reese reports that close examination of the photo revealed that it was the White M. That makes the 3rd one seen this year in Wisconsin! The only previous record for Wis. was a single individual back in 1930!

4 THE NABA BIENNIAL MEETING IN TEXAS WAS A SMASHING SUCCESS !!



The NABA Biennial Meeting in Mission, Texas was a smashing success! The National Butterfly Center is the 100 acre NABA property located adjacent to the Lower Rio Grande River near Bentsen State Park at Mission. The National Butterfly Center is dedicated to education, conservation and scientific research on wild butterflies.

The new Visitor's Pavilion, opened in a ceremony on October 28, is very impressive. The facilities are spacious and there is a pleasant pervasive green color on the inside! Of course there remains much to do yet, but it's a very exciting beginning for education of the public about butterflies.

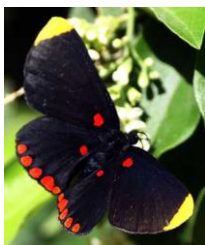


Interior of Visitor's Pavilion

Outside, the butterflies were spectacular! This part of Texas harbors some 300 species of butterfly, more than the entire eastern U. S. More than 200 species have been seen at the National Butterfly Center alone!

During this Biennial Meeting a total of more than 120 species were seen! Even NABA's President, Jeffrey Glassberg, saw 4 new species for his U. S. "Life List"!

Some favorites are shown in the photos. By planting thousands of plants that the butterflies need for nectar and for caterpillar growth, NABA has created a butterfly paradise that sustains large populations of hundreds of species of butterflies.

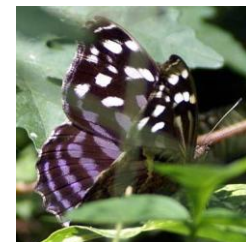


Red-bordered Pixie

Blomfield's Beauty



Gulf Fritillary



Mexican Bluewing

5 SUPER-ZOOM DIGITAL CAMERAS

Detailed camera reviews are available on the Digital Photography Review website. The review includes comparison of actual photos for 9 digital zoom cameras that can vary the lens from wide-angle to telephoto. This type of camera can take good butterfly photographs but is also very versatile for general photography, and is intermediate in price (\$250 - \$440). The full review is at:

<http://www.dpreview.com/reviews/Q110superzoomgroup/>

The best rated zoom cameras were Canon Powershot SX20 IS and Panasonic Lumix DMC-FZ35. The Nikon Coolpix P100 was 3rd.



Canon SX20 IS



Panasonic FZ35

6 THE TWENTY MOST TOXIC CATERPILLARS !!



While at the NABA Biennial Meeting in Texas your editor photographed a caterpillar that was described as poisonous. It is the **Puss Caterpillar** (Southern Flannel Moth) and is regarded as the most poisonous caterpillar in the country! It spits acid and has venomous stinging spines. (It does not occur in Wisconsin.) Some caterpillars do have a toxic defense against predators, usually by being unpalatable or with stinging hairs. More information about caterpillars can be found in the book Caterpillars of Eastern North America by David L. Wagner.

Since poisonous caterpillars are usually strongly marked so as to be recognizable as poisonous by predators, they make for an interesting website with photos and text:

http://www.bukisa.com/articles/99170_the-twenty-most-toxic-caterpillars

The first one listed, **Wattle Cup Caterpillar**, is an absolutely amazing looking caterpillar!

**The Badger ButterFlyer flits to you every month (every other month in winter).
The next issue will be in FEBRUARY-MARCH.**

Officers of SWBA:

President: Joan Braune

jbraune@sbcglobal.net

Vice-President: Karl Legler

karlndot@charter.net

Secretary: Dorothy Legler

Treasurer: Ginny Nelson

Other SWBA contributors:

e-Newsletter Editor: Karl Legler

karlndot@charter.net

Webmaster: Ann Thering

Butterfly Reporting:

Mike Reese at

www.wisconsinbutterflies.org

SWBA

The Southern Wisconsin Butterfly Association (SWBA) is a non-profit Wisconsin chapter of the North American Butterfly Association (NABA) which is the largest organization of people interested in butterflies. SWBA promotes public awareness, conservation and the enjoyment of butterflies through observation with close-focusing binoculars, chapter field trips, educational meetings, photography, butterfly gardening, monitoring and travel. SWBA's events are open to the public.

To become a member of SWBA simply join NABA. Membership benefits include 2 color quarterly magazines "American Butterflies" and "Butterfly Gardening". Please use the membership form on the SWBA Web site at <http://www.naba.org/chapters/nabawba/>

Our e-Newsletter, the Badger ButterFlyer, will be published monthly in spring to fall, and every other month in winter. Send any news notes to the editor, Karl Legler, at karlndot@charter.net

To stop receiving this e-Newsletter simply send an email to the above editor's address.