

Badger Butterfly

The e-Newsletter of the Southern Wisconsin Butterfly Association **JUNE, 2013**

WEB SITE: <http://www.naba.org/chapters/nabawba/>

1 NEXT FIELD TRIPS Mark your calendar!

Saturday, June 22: Butterflies of Cherokee Marsh

On this morning walk we'll observe and learn about butterflies, those small but exquisitely beautiful creatures that dance about our ankles in summer. **Dr. Douglas Buege** will lead this 2 hour walk at Cherokee Marsh on the northeast side of Madison. We will observe a variety of butterflies as they take nectar from wildflowers, and learn about their identification, behavior, and lifestyle. Bring binoculars if you have them — close-focusing ones work best. We have a few extra pairs of binoculars. It's best to wear long pants and a hat for protection from the sun. This is a joint trip of SWBA with the Madison



Great Spangled Fritillary

Audubon Society, and Friends of Cherokee Marsh.

Meet at 10:00 a.m. **DIRECTIONS:** On the north side of Madison take Northport Drive (Highway 113) then turn north on Sherman Ave. Meet at the Cherokee Marsh parking lot at the north end of Sherman Ave. Call Douglas at 441-9833 or email djbuege@gmail.com, only if you have a question about the trip.

Saturday, June 29: Madison Butterfly Count

This is our 23rd annual butterfly count! Co-sponsors are SWBA, UW Arboretum and Madison Audubon Society. Each summer butterfly enthusiasts all over North America participate in more than 483 censuses of butterfly species. Each count is similar to a Christmas Bird Count. These censuses help to monitor the health of our butterfly populations and the results are published in an annual report for North America. If you can identify butterflies, or can help spot butterflies, or just want to see and learn about butterflies, join us on this 3 hour count/field trip. Bring binoculars, the closer they focus the better. (We have a few extra binoculars.) Dress for protection from the heat and



Edward's Hairstreak

sun, a hat is recommended. The North American Butterfly Association (NABA) requires a \$3.00 fee from each participant to help cover publishing costs. Meet at 9 a.m. at the parking lot for the Grady Tract in the UW Arboretum. We will count until about noon. **DIRECTIONS:** Heading west on the Beltline (Hwy 12), take the Seminole Hwy exit and then turn left (south) on Seminole Hwy driving across the bridge over the Beltline, turning immediately into the parking lot for the Grady Tract. If you have a question about the butterfly count, contact leaders Karl and Dorothy Legler at (608) 643-4926 or karlndot@charter.net

IN THIS ISSUE:

1. NEXT FIELD TRIPS:

- CHEROKEE MARSH, JUNE 22.
- Madison Butterfly Count, June 29.
- Butterflies and Dragonflies of Swamp Lover's Preserve, July 4.
- Sandhill Wildlife Area, July 6
- Butterflies & Dragonflies of Summerton Bog, July 13.

2. OTHER UPCOMING FIELD TRIPS.

3. Highlights of Bauer-Brockway Barrens trip.

4. Revised NABA Count dates.

5. Butterfly Reports of May, 2013

6. REGISTRATION NOW OPEN FOR THE TEXAS BUTTERFLY FESTIVAL November 2-5, 2013.

Thursday, July 4: Butterflies and Dragonflies at Swamp Lover's Preserve.

Celebrate July 4th at this beautiful private preserve that consists of remnant and restored wetlands, remnant bluff prairie, restored tall grass prairie, and dry hilly oak-hickory woodland. In past years, we have observed an impressive variety of dragonflies and butterflies as we explored the different habitats. Bring binoculars (close-focusing ones work best) along with your own lunch and beverages to enjoy when we finish the trip at the bluff-top picnic shelter. Leaders are **Tod Highsmith, Karl and Dorothy Legler**. This is a joint trip of SWBA with the Madison Audubon Society and is co-sponsored by The Prairie Enthusiasts.

Meet at 9:30 a.m. This trip will last until 1:00 p.m. **DIRECTIONS:** Travel west from Cross Plains on Hwy 14. Just outside town take County KP to the right (north), go about 1.3 mile and turn left at the Swamp Lovers sign. Call Karl Legler at (608) 643-4926 or cell (608) 228-0743 only if you have a question about the trip or if the weather is questionable.

Saturday, July 6: Butterflies of Sandhill Wildlife Area (Wood Co.)

The Sandhill State Wildlife Area, in Wood County, covers more than 14 square miles. It is managed by the Wisconsin DNR as a living laboratory for wildlife management techniques. Sandhill has large marshes and many flowages, interspersed with low sandy uplands, pine and oak barrens and restored prairies. Butterfly enthusiast **Ron Arnold** has been surveying the butterflies at Sandhill for more than 20 years. On this trip Ron will lead us in finding such beauties as Acadian and Coral Hairstreaks, Aphrodite Fritillary, the rare Two-spotted Skipper, Bronze

(If you want to walk in the bog bring boots. Bog Coppers have been seen there.)

Bring binoculars, the closer they focus the better. (We will have a few extra pairs of binoculars.) Also

bring insect repellent to protect against mosquitoes, and ticks. A hat, long sleeves and long pants are recommended. Bring a bag lunch and water. This is a joint trip of SWBA with Madison Audubon Society

Meet at 10:00 a.m. at the Sandhill Headquarters parking lot. (The tour will last until 3:00 p.m.) **DIRECTIONS:** Take I-90/94 up to the New Lisbon area in Juneau Co. and take Hwy 80 north. In



Karner Blue (female)

Copper, Eyed Brown, Northern Pearly-eye, White Admiral and many others. Skippers will include Black Dash, Broad-winged, Dion, Long Dash and many others. We may see the beautiful Baltimore Checkerspot, Harris' Checkerspot and the Federally Endangered Karner Blue. If time permits, we could also visit a nearby spruce/tamarack bog.

Wood County, just 1/3 mile before Babcock, turn left onto County X. Go 1 1/4 mile on X to the Sandhill entrance. (Allow at least 1 hour and 45 minutes for travel.) Call Ron at (715) 424-2996 only if you have a question about the trip. On the day of the trip, Ron will have his cell phone on: (715) 741-0052. (If rain threatens, call Ron to see if the trip must be cancelled due to weather.)

Saturday, July 13: Butterflies and Dragonflies of Summerton Bog

Summerton Bog is an amazing, 480 acre mix of tamarack bog, wet and dry meadows, hardwood forest, marsh and springs. On top of that, when a natural gas pipeline was put through the west end, it was replanted with prairie flowers and grasses. 60 species of butterflies have been sighted there in the last two years. The area we will cover is predominantly dry. Leaders will be **Dan Sonnenberg and Karl and Dorothy Legler**. This is a joint trip of SWBA with the Madison Audubon Society. Bring binoculars, the closer they focus the better. (We will have a few extra pairs of binoculars.) A hat, long sleeves and long pants are recommended. Bring a bag

lunch and water. After lunch we may venture to another place nearby, if time allows.

Meet at the bog at 10:00 a.m.

DIRECTIONS FROM MADISON: Take I-90/94 to the I-39 North exit. 13 miles north of Portage take exit# 104 and turn left (west) on County Road D. Travel approx. 1.3 mile and turn left on Freedom Rd. Travel roughly 1.6 miles, passing the first parking lot with a "Summerton Bog" sign. Park at the second parking lot which is also on the left, is larger, and has a brown sign. Call Karl Legler at (608) 643-4926 only if you have a question about the trip.

2 UPCOMING FIELD TRIPS

Details in next issue of the Badger ButterFlyer, or see the SWBA web site:

<http://www.naba.org/chapters/nabawba/>

Sunday, July 14: Pretty Things with Wings: Birds, Butterflies and Dragonflies of Lakeshore Nature Preserve (Edgar Spalding)

Saturday, July 20: Prairie Restoration for Karner Blue Butterflies (John Shillinglaw and Mike Reese)

Sunday, July 21: Flowers and Butterflies of Schurch-Thomson Prairie (Rich Henderson)

Saturday, August 11: Butterflies of the Avoca/Blue River Area (Mike Reese).

Saturday, August 25: Butterflies and Blossoms at Pheasant Branch (Dreux Watermolen)

3 HIGHLIGHTS OF BAUER BROCKWAY BARRENS TRIP (JACKSON COUNTY)

Ten people turned out for the Jackson County spring butterfly trip. A couple from Texas and a woman from Boston joined us! We found 12 species which is low due to the cold spring. This is the lowest number of species in the 7 years this field trip has been conducted. If we ignore the highly anomalous hot spring of 2012, we have previously averaged 21 species and 232 individuals, but this year we found 12 species and 85 individuals. Nevertheless, we did manage to see all 5 species of Elfins in the state, including the threatened Frosted Elfin. (Elfins fly almost entirely in the month of May). Species encountered are listed below. The best finds are indicated in bold type.



Henry's Elfin is rare.

Eastern Tailed-Blue 2
Spring Azure 4
Henry's Elfin 1
Hoary Elfin 20

Brown Elfin 2
Eastern Pine Elfin 16
Frosted Elfin 1
Juvenal's Duskywing 2

Sleepy Duskywing 1
Clouded Sulphur 3
Mourning Cloak 1
Olympia Marble 31

Ann and Scott Swengel were also surveying in the general area so we will be able to count their species in with the field trip results, when we send it in as the Wazee Spring Count. That provided at least an additional 2 species, American Lady and Dreamy Duskywing.

4 REVISED DATES FOR 2013 NABA BUTTERFLY COUNTS

These butterfly counts are conducted exactly like Christmas Bird Counts: Identify butterfly species and count individuals, staying within a 15 mile diameter circle. The data from hundreds of counts is collected and published. Some 17 NABA Butterfly Counts take place in Wisconsin each year. Below are ones that are connected with SWBA.

- ❖ Madison (Dane County) Saturday, June 29
- ❖ Mud Lake (Columbia County) Wednesday, **July 1 (DATE CHANGE)**
- ❖ Trempealeau (Trempealeau County) Tuesday, July 9
- ❖ Dubuque (Iowa) Sunday, July 14

❖ Northern Kettle Moraine (Fond du Lac Co.) Monday, July 15

❖ Sister Bay (Door Co.), Wednesday, July 17

To join in on these fun counts -- or for more information about SWBA-sponsored NABA counts, please contact the SWBA count coordinators: Karl and Dorothy Legler, karlndot@charter.net (608) 643-4926. (NABA charges a \$3 fee to participate in a count, to help defray the cost of publication.)

(For a list of additional Butterfly Counts in Wisconsin and elsewhere, visit NABA's Web site at www.naba.org/counts/us_mx_map.html Contacts are Listed.)

5 BUTTERFLIES REPORTED IN MAY AT www.wisconsinbutterflies.org

Some common butterflies reported include:

Black Swallowtail

Eastern Tiger Swallowtail

Cabbage White

Clouded Sulphur

Eastern Tailed-Blue

Spring Azure

Pearl Crescent

Mourning Cloak

American Lady

Juvenal's Duskywing

Sightings of scarce species included 16 reports of **Silvery Blue** (with high counts of 18 and 13). **Gorgone Checkerspot** was reported in small numbers until the very end of May (count of 75 in Jackson Co.). 5 reports of **Henry's Elfin**, usually only 1 or 2 individuals. The Threatened **Frosted Elfin** peaked with a count of 12 on the 19th. **Harvester** had 5 reports and the **Persius Duskywing** had 6 reports.

Northern bog butterflies showed 8 reports for **Freija Fritillary**, with high counts of 19 and 21. The **Red-disked Alpine** garnered 4 reports with highs of 15 and 33! The **Mustard White** had 5



Juniper Hairstreak
nectaring on Pussytoes.

reports. Surprisingly, the **Painted Lady** (an immigrant) turned up 3 reports of 6 individuals. An indicator of what kind of cool May we had is the Jackson County field trip on May 18, which had the lowest in species and number of butterflies of the past 7 years. (See Section 3.)

Only two reports for **Green Comma**, **Frigga Fritillary**, **Chryxus Arctic**, and the **Pepper and Salt Skipper**.

Scarce species with only a single report were **Western Tailed-Blue**, **Juniper Hairstreak**, **Jutta Arctic**, **Cobweb Skipper**, **Columbine Duskywing**, **Mottled Duskywing**, and **West Virginia White**.

Be sure and send in your sightings to Mike Reese's website www.wisconsinbutterflies.org

6 REGISTRATION IS NOW OPEN FOR THE 18th ANNUAL TEXAS BUTTERFLY FESTIVAL!

Join us for the nation's premier butterflying event!



Saturday, Nov. 2 – Tuesday, Nov. 5, 2013

Now a special production of NABA's National Butterfly Center, this year's event will feature:

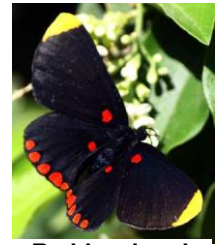
Field Trips & Educational Activities for Beginners – Experts

The first 'Big Day of Butterflying' Species Count Competition

A North American Butterfly Photo Contest

Come to the Rio Grande Valley!

One of the most biologically diverse areas in North America sits along the border, between Texas and Mexico, where the Rio Grande winds its way toward the Laguna Madre. The Lower Rio Grande Valley (LRGV), in deep South Texas, encompasses no fewer than 11 different types of habitat, including tidal wetlands and riparian forest; and this region is home to more than 1,200 different species of plants, 500 species of birds, 200 vertebrate species, roughly 300 species of butterflies, and over 90 species of dragonflies!



**Red-bordered
Pixie**

The Rio Grande Valley has earned worldwide recognition for its outstanding butterfly and birding spots, inviting thousands of visitors each year to discover its remarkable assortment of preserves, refuges, nature parks, trails, and more.

This year, the [National Butterfly Center](#) is honored to host the **18th Annual Texas Butterfly Festival**. Our goal is to provide attendees a fulfilling and rewarding experience. From November 2 - 5, 2013, attendees will spend 3 days exploring renowned public lands and private properties with world-class trip leaders and expert guides. The Festival is taking place during prime butterfly season, when you may reasonably expect to see 60 or more species in a day.

Three Events in One Week

It's official! Two other great events are scheduled to occur in the days following the Texas Butterfly Festival: The **20th Annual Rio Grande Valley Birding Festival** and the **Focus on Diversity Conference**. Plan to visit for one, two or all three special events!

FOR MORE INFORMATION OR TO REGISTER, GO TO THE WEBSITE:

<http://www.texasbutterflyfestival.com/>

The Badger ButterFlyer flits to you every month (every other month in winter). The next issue will be in JULY.

Officers of SWBA:

President: Dr. Douglas Buege

djbuege@gmail.com

Vice-President: Karl Legler

karlndot@charter.net

Secretary: Dorothy Legler

Treasurer: Ginny Nelson

Other SWBA contributors:

e-Newsletter Editor: Karl Legler

karlndot@charter.net

Webmaster: Dan Sonnenberg

Butterfly Reporting:

Mike Reese at

www.wisconsinbutterflies.org

Speaker's Bureau: Dorothy Legler

NABA Liaison: Joan Braune

SWBA

The Southern Wisconsin Butterfly Association (SWBA) is a non-profit Wisconsin chapter of the North American Butterfly Association (NABA) which is the largest organization of people interested in butterflies. SWBA promotes public awareness, conservation and the enjoyment of butterflies through observation with close-focusing binoculars, chapter field trips, educational meetings, photography, butterfly gardening, monitoring and travel. SWBA's events are open to the public.

To become a member of SWBA simply join NABA. Membership benefits include 2 color quarterly magazines "American Butterflies" and "Butterfly Gardening". Please use the membership form on the SWBA Web site at <http://www.naba.org/chapters/nabawba/>

Our e-Newsletter, the Badger ButterFlyer, will be published monthly in spring to fall, and every other month in winter. Send any news notes to the editor, Karl Legler, at karlndot@charter.net

To stop receiving this e-Newsletter simply send an email to the above editor's address.