

Badger ButterFlyer

The e-Newsletter of the Southern Wisconsin Butterfly Association MARCH, 2014

WEB SITE: <http://www.naba.org/chapters/nabawba/>

1 NEXT SWBA PUBLIC MEETING WILL BE HELD ON WEDNESDAY, APRIL 2, 2014! at 7:00 p.m., in the meeting room of the Fitchburg Public Library, 5530 Lacy Road, Fitchburg, WI. (mark your calendar!)



West

East

Fitchburg Public Library

IN THIS ISSUE:

1. NEXT SWBA MEETING: **WEDNESDAY, APRIL 2, 2014**
2. Program on "Plight of the Monarch" at Fitchburg Library, Thursday, March 20 at 7-8 p.m.
3. NABA Biennial Meeting, June.
4. BUTTERFLY GARDEN: Planting a Monarch Waystation.
5. Dates of some NABA Butterfly Counts.
6. FIELD TRIP SCHEDULE 2014

Public Program:

Past and future climate change impacts on alpine butterflies in the Sierra Nevada, California. Our speaker will be **Dr. Sean Schoville**, an assistant professor of entomology at UW-Madison. Alpine environments are extreme habitats with protracted winters, high climatic variability, and a history of rapid and repeated environmental transition. Despite many physiological challenges, a remarkable community of insects live exclusively in alpine environments. Dr. Schoville has been using genetic data to understand how alpine butterflies colonize, persist and diversify within alpine habitats of the Sierra Nevada Mountains of California. He is particularly interested in the response of populations to climatic warming and cooling. Don't miss this interesting presentation!



Photo Show and Tell

Share some of your favorite butterfly, caterpillar, moth, or dragonfly photos and enjoy the photos of others. You are welcome to briefly comment about the subject of your photos. **Starting this year, for each person bringing photos, we will put their best photo on the SWBA website.**

Please email up to 8 digital photos (as file attachments) to **Mike Reese** at mikereese@wisconsinbutterflies.org

Otherwise, you can bring digital photos to the meeting on a CD or USB flash drive.

Also a brief Election of Officers

If you are interested in serving as an officer of SWBA for the next year, or would like to nominate someone else, contact the Nominating Committee Chairperson **Tod Highsmith** at (608) 242-1168 or at todhighsmith@me.com

Everyone is welcome to attend this free program.

The meeting will last from 7:00 p.m. to 9:00 p.m. We will have displays, books, handouts and plenty of time afterwards to enjoy *delicious* snacks and refreshments, and talk with our speaker and other butterfly enthusiasts.

DIRECTIONS TO MEETING:

From the Beltline, take Fish Hatchery Road (= county D) south for about 2.4 miles and turn left (east) at Lacy Rd. After 1 block the library is on the left, at the intersection of Lacey Rd. and Research Park Rd. Continue on Lacy and take the entrance road around the far (east) end of the library to access parking near the entrance, (behind the library).

OR if you prefer to park underground, turn left (north) onto Research Park Rd and then turn right into the ramp leading to the underground parking lot.

2 PRESENTATION ON "PLIGHT OF THE MONARCH" AT THE FITCHBURG LIBRARY ON THURSDAY, MARCH 20, 7- 8 p.m.

The Monarch is a world-class migratory phenomenon that is endangered. Karl and Dorothy Legler will give a program, sponsored by the Fitchburg Senior Center, highlighting the problems, migration, and precipitous population decline of the Monarch butterfly. The decline is due, in part, to a massive loss of the required caterpillar food plant, various milkweeds. Learn how to help Monarchs and other butterflies by adding a planting of milkweeds and other native flowers and plants to your yard or property. Handouts will be provided.



3 NORTH AMERICAN BUTTERFLY ASSOCIATION (NABA) BIENNIAL MEETING: TENNESSEE JUNE 12 - 15, 2014

Don't Miss the 2014 NABA Members* Meeting in Chattanooga, Tennessee.

Grab it All!

Fun Times, Warm Friends, Great Butterflies, Beautiful Scenery, Bluegrass Music, Southern Cooking.

Be a part of a swarm of hundreds of happy butterflyers.

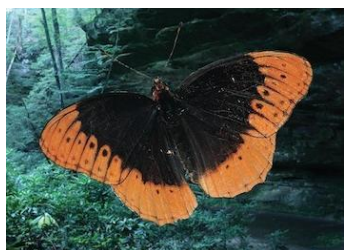
*** If you are not a member of NABA you can still attend the Members Meeting.**

(For non-members there is a slightly higher cost -- which includes a 1 year NABA Membership!)

Butterflies include Diana Fritillary, Zebra Swallowtail, Spicebush Swallowtail, Lace-winged Roadside Skipper and possible Hickory Hairstreak, etc.



Diana Fritillary (female)



Diana Fritillary (male)

Destinations include Cumberland Plateau, a garden tour of Chattanooga homes, May Prairie State Natural Area, Prentice-Cooper State Forest and other natural areas.

Each day will be highlighted by a **series of workshops** on topics such as identification, photography, butterfly gardening, etc.

There will be 7-8 hours of **field trips** for each of 3 days. There will also be **optional pre-meeting field trips.**

You will attend two evenings of **Banquets with speakers.** Bring close-focusing binoculars. (Nets are not permitted.) Cost is \$275 per person

which covers **3 days of field trips, 2 banquets, and 3 box lunches!**

(Note: the price goes up \$25 after April 16.)

Brochure: http://www.naba.org/ftp/registration_brochure_2014_Jan_13.pdf

Online Registration: <http://www.naba.org/meeting/online2.html>

4 BUTTERFLY GARDENING:

PLANTING A MONARCH WAYSTATION

By Dorothy Legler

In February, SWBA had a booth at Garden Expo in Madison. Many people that stopped at the booth expressed concern about the plight of the Monarch. "What can we do?" they asked. The answer is that you can start a Monarch Waystation (a project of Monarch Watch). This consists of at least 10 plants of two or more species of Milkweeds (host of the Monarch), and several species of flowers for a nectar source. It is planted in a 10 foot by 10 foot space (or larger if you can). The simplest way to do this is buy the Monarch Watch's Waystation Seed Kit which includes the milkweed and flower seeds, for \$16. Or you can instead buy plants or seeds on your own. The 5 milkweeds that are recommended for a Waystation are:



Common Milkweed

- 1) Common Milkweed (*Asclepias syriaca*). It will form clones but in a small garden just pull it out where you don't want it, or transplant the stem. It can be grown from seed.
- 2) Swamp Milkweed (*A. incarnata*). It will grow in average garden soil or in moist areas. This plant is short-lived, about 3-5 years, so keep adding some. This species is often available from a nursery as plants.
- 3) Butterfly Weed (*A. tuberosa*). This milkweed likes well drained medium to dry soil.

It is readily available at nurseries and from catalogs.

- 4) Whorled Milkweed (*A. verticillata*). This plant grows in dry areas. Grow from seed. It will form clones.
- 5) Polk Milkweed (*A. exultata*). This is a lesser known milkweed that is suitable for a savannah or wooded situation, in medium soil. Grow from seed.

All milkweed seeds need at least a 30 day moist cold treatment called "stratification". You can simply put the seeds in moist potting soil, in a sealed bag or container, in the refrigerator, for 30 days. Then plant in flats under lights. (If you don't want to have soil in your refrigerator, you can put the seeds between wet paper towels in a sealed bag to stratify.) Or, you can wait with stratification until later so that afterwards you can set the flats outside to germinate and grow.

A tropical milkweed that can be planted as an annual here is Bloodflower (*A. curassavica*). It is an excellent host plant for Monarchs and is easy to grow. It's best to start the seed indoors. Good luck, planting for Monarchs and other butterflies!

Monarch Waystation: <http://www.monarchwatch.org/waystations/>

Waystation Seed Kit: http://www.monarchwatch.org/waystations/seed_kit.html

5 DATES FOR SOME 2014 NABA "4TH OF JULY" BUTTERFLY COUNTS

These butterfly counts are conducted exactly like Christmas Bird Counts: Identify butterfly species and count individuals, staying within a 15 mile diameter circle. The data from hundreds of counts is collected and published each year. Some 17 NABA Butterfly Counts take place in Wisconsin. Below are ones that are connected with SWBA.

- ❖ Mud Lake (Columbia County) Tuesday, July 1, 2014
- ❖ Madison (Dane County) Saturday, July 5, 2014
- ❖ Trempealeau (Trempealeau County) Wednesday, July 9, 2014
- ❖ Dubuque, IA (Wisconsin portion) Sunday, July 13, 2014
- ❖ Northern Kettle Moraine (Fond du Lac County) Tuesday, July 15, 2014
- ❖ Sister Bay (Door County) Thursday, July 17, 2014

To join in on these fun counts -- or for more information about SWBA-sponsored NABA counts, please contact the SWBA count coordinators: Karl and Dorothy Legler, karlndot@charter.net (608) 643-4926. (NABA charges a \$3 fee to participate in a count, to help defray the cost of publication.)
 (For a list of additional Butterfly Counts in Wisconsin and elsewhere, visit NABA's Web site at www.naba.org/counts/us_mx_map.html Contacts are Listed.)

6 FIELD TRIP SCHEDULE FOR 2014

DAY	DATE	TRIP TITLE	LEADER(S)
Saturday	May 17	Butterflies of Bauer Brockway Barrens (Jackson Co.)	Mike Reese
Saturday	June 21	Butterflies and Wildflowers at Pleasant Valley Conservancy	Ann Thering Kathie and Tom Brock
Saturday	June 28	Butterflies of Cherokee Marsh	Karl & Dorothy Legler*
Friday	July 4	Butterflies and Dragonflies of Swamp Lovers Preserve	Tod Highsmith Karl and Dorothy Legler
Saturday	July 5	Madison Butterfly Count	Karl and Dorothy Legler
Sunday	July 6	Butterflies & Dragonflies of Riveredge and Cedarburg Bog State Natural Area	Kate Redmond Mike Reese
Saturday	July 12	Butterflies of Page Creek Marsh and John Muir Park	Dan Sonnenberg
Sunday	July 13	Pretty Things with Wings (Birds, Butterflies and Dragonflies of Lakeshore Nature Preserve)	Edgar Spalding
Saturday	July 19	Flowers and Butterflies of Shea Prairie	Rich Henderson Dr. Douglas Buege*
Saturday	August 9	Butterflies of Avoca/Blue River Area	Mike Reese
Saturday	August 23	Butterflies and Blossoms at Pheasant Branch Conservancy	Dreux Watermolen

* indicates change in leaders of the field trip due to schedule conflicts.

The Badger ButterFlyer flits to you every month (every other month in winter). The next issue will be in APRIL.

Officers of SWBA:

President: Dr. Douglas Buege
djbuege@gmail.com
 Vice-President: Karl Legler
karlndot@charter.net
 Secretary: Dorothy Legler
 Treasurer: Ginny Nelson

Other SWBA contributors:

e-Newsletter Editor: Karl Legler
karlndot@charter.net
 Webmaster: Dan Sonnenberg
 Butterfly Reporting: Mike Reese at
www.wisconsinbutterflies.org
 Speaker's Bureau: Dorothy Legler
 Dr. Douglas Buege
 NABA Liaison: Joan Braune

SWBA

The Southern Wisconsin Butterfly Association (SWBA) is a non-profit Wisconsin chapter of the North American Butterfly Association (NABA) which is the largest organization of people interested in butterflies. SWBA promotes public awareness, conservation and the enjoyment of butterflies through observation with close-focusing binoculars, chapter field trips, educational meetings, photography, butterfly gardening, monitoring and travel. SWBA's events are open to the public.

To become a member of SWBA simply join NABA. Membership benefits include 2 color quarterly magazines "American Butterflies" and "Butterfly Gardening". Please use the membership form on the SWBA Web site at <http://www.naba.org/chapters/nabawba/>

Our e-Newsletter, the Badger ButterFlyer, will be published monthly in spring to fall, and every other month in winter. Send any news notes to the editor, Karl Legler, at karlndot@charter.net

To stop receiving this e-Newsletter simply send an email to the above editor's address.