

# Badger ButterFlyer

The e-Newsletter of the Southern Wisconsin Butterfly Association

MARCH, 2016

WEB SITE: <http://www.naba.org/chapters/nabawba/>

## 1 NEXT MEETING ON WEDNESDAY, APRIL 27, 2016

The next SWBA meeting will be held on **Wednesday, April 27, at 7:00 p.m.**, in the meeting room of the **Fitchburg Public Library, 5530 Lacy Road, Fitchburg, WI.** (**Mark your calendar!**)



West

East

### IN THIS ISSUE:

1. **SWBA MEETING**  
Wednesday, April 27, 2016.
2. **NEXT FIELD TRIP.**  
Bauer-Brockway Barrens.
3. **Monarch Winter Population.**
4. **Early Spring Butterfly Reports.**
5. **2016 Field Trip Schedule.**
6. **2016 NABA Butterfly Count Schedule.**
7. **2016 NABA Biennial Meeting.**

## Two Public Programs:

### 1) Aldo Leopold's Land Ethic and the Fate of the Monarch Butterfly

The Monarch Butterfly has declined by >90% over the last decade, and its future depends crucially on management practices on privately owned lands in the Midwest. Aldo Leopold's "land ethic" highlights the responsibilities of private landowners to care for the other species that live on their property, not because they are forced to do so by regulations or coerced to do so with subsidies, but because it is simply the right thing to do. **Professor Stanley Temple** will review the Monarch situation and explain how Leopold's land ethic will play a role in the butterfly's future.



**Professor Stanley Temple** is recently retired from the academic position at the University of Wisconsin once held by Aldo Leopold. He is now a Professor Emeritus and a Senior Fellow at the Aldo Leopold Foundation. Professor Temple is a noted authority on conservation issues and Aldo Leopold's contributions to the field.

### 2) 2015: The Year in Butterflies (Mike Reese)

Every butterfly year is different and has its own uniqueness and idiosyncrasies. It will be good to sit back and take stock of how butterflies fared this past year. In this 30 minute informative program, retired educator and butterfly expert, **Mike Reese**, will show some of the dazzling photos he took, or that have been submitted to his award-winning website, [wisconsinbutterflies.org](http://wisconsinbutterflies.org), last year. (It received more than 7,600 species-reports!) Mike will talk about the most fascinating and significant butterfly encounters around the state for 2015. He will explain which butterflies were up and which were down.



Funereal Duskywing

## Also a brief Election of Officers

If you are interested in serving as an officer of SWBA for the next year, or would like to nominate someone else, contact the Nominating Committee Chairperson Tod Highsmith at (608) 242-1168 or at [tohighsmith@me.com](mailto:tohighsmith@me.com)

**Everyone is invited to attend this free program.** The meeting will last from 7:00 p.m. to 9:00 p.m. We will have displays, books, handouts and plenty of time afterwards to enjoy *delicious* snacks and refreshments, and talk with our speaker and other butterfly enthusiasts.

### **DIRECTIONS TO MEETING:**

From the Beltline, take Fish Hatchery Road (= County D) south for about 2.4 miles and turn left (east) at Lacy Rd. After 1 block the library is on the left, at the intersection of Lacey Rd. and Research Park Rd. Continue on Lacy and take the entrance road around the far (east) end of the library to access parking near the entrance, (behind the library). **OR** if you prefer to park underground, turn left (north) onto Research Park Rd and then turn right into the ramp leading to the underground parking lot.

---

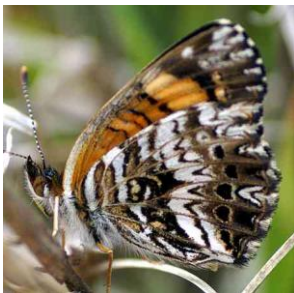
## 2 NEXT FIELD TRIP

Mark your calendar!

### **Butterflies of Bauer-Brockway Barrens (Jackson Co.)**

**Saturday, May 21**

**10:30 a.m. - 3:00 p.m.**



Gorgone Checkerspot

The best place in the state to look for early butterflies in May is Jackson County. Butterfly expert **Mike Reese** will lead us in finding and observing many scarce and unusual species, many that only fly in May! We expect to find all 5 of the state's Elfins, including the very rare (and State Threatened) Frosted Elfin. We should find Olympia Marble, Gorgone Checkerspot, Cobweb Skipper, Dreamy and Sleepy Duskywings, etc. Over the past 9 years we have averaged 21 species. Bring binoculars if you have them, close-focusing ones work best. (A few extra pairs of binoculars are available.) Also, bring a bag lunch and water. A hat, long pants and long sleeves are recommended.

**Meet in Jackson Co. at 10:30 a.m.** at the corner of West Bauer Road and Brockway Road. We will butterfly until 3:00 p.m. DIRECTIONS: From the intersection of I-94 and Hwy 54 in Black River Falls, go east on Hwy 54 approximately 3.8 miles to Brockway Road. Turn right on West Bauer Road and drive 3.8 miles to the intersection with North Brockway Road. (This area is about 2 1/4 hours northwest of Madison via I-94.)

**Participants must PRE-REGISTER** for this trip by either calling Mike at (920) 647-0196, or include your phone number in an email to [mikereese@wisconsinbutterflies.org](mailto:mikereese@wisconsinbutterflies.org) (so we can contact you in case of postponement or cancellation due to weather).



Olympia Marble

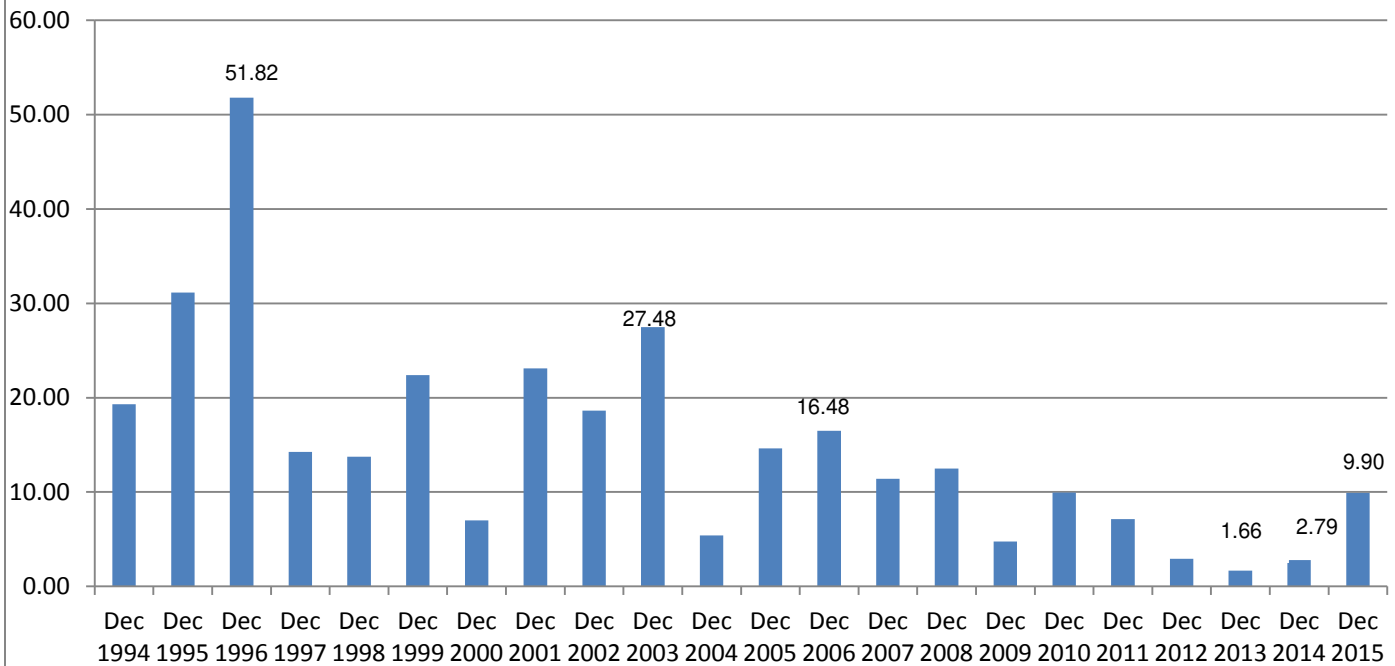
---

## 3 MONARCH POPULATION AT THE BEGINNING OF 2016

"World Wildlife Fund Mexico in collaboration with SEMARNAT and CONANP and the Monarch Butterfly Biosphere Reserve (MBBR) announced the total forest area occupied by overwintering monarch colonies near Mexico City. Nine colonies were located this winter season with a total area of 4.01 hectares." (9.9 acres) (Monarch Watch.)

This is 3 1/2 times the population of last winter! That is encouraging news since the lower the population, the greater the chance that a winter storm in the mountains of Mexico could wipe them out. This is the sort of expansion that they sorely need. Nevertheless, habitat in North America for Monarchs continues to diminish at the rate of 1-2 million acres a year, so it remains necessary to increase areas of milkweed, the caterpillar food plant. Below is the chart of population (in acres) for the past 22 years.

## TOTAL AREA OF WINTERING MONARCHS (IN ACRES)



### 4 UNUSUALLY EARLY BUTTERFLIES REPORTED TO [wisconsinbutterflies.org](http://wisconsinbutterflies.org)

For the first time in the 12 year history of [wisconsinbutterflies.org](http://wisconsinbutterflies.org), a report was received of a butterfly sighting *in February!* An **Eastern Comma** was seen in Crawford County on February 27. Another Eastern Comma was reported from Waushara County on March 6. We inevitably think of these as the first butterflies of 2016, but they are not! Wisconsin's resident butterfly species overwinter in different life-cycle stages: Some overwinter as an egg, some as a caterpillar, some as a chrysalis, and a few species overwinter as adult butterflies. These adult butterflies spend the winter in hollows in trees, logs, nooks and crannies, garages and outbuildings. (Decades ago, on an October field trip to Natural Bridge



Eastern Comma

State Park the group entered a shed and discovered a half dozen Milbert's Tortoiseshell butterflies, hanging upside-down from the ceiling -- like tiny bats. They were already hibernating for the winter.) It is these species that hibernate as adult butterflies, that are therefore "ready to go" in early spring, whenever the weather gets warm enough. But since they were born in 2015, they are actually not the first butterflies of 2016, they are the last butterflies of 2015! They will mate this spring and lay eggs continuing the reproductive cycle. Eastern Commas have 2 generations each year so it is their "grandchildren" that will hibernate next winter.

Here is a list of the species that overwinter as adults and so tend to reappear first in spring:

LADIES	TORTOISESHELLS	ANGLEWINGS
American Lady	Mourning Cloak	Eastern Comma
	Compton Tortoiseshell	Gray Comma
	Milbert's Tortoiseshell	Satyr Comma (N. Wis)
		Green Comma (N. Wis)

[Keep sending reports to wisconsinbutterflies.org](http://wisconsinbutterflies.org)

## 5 FIELD TRIP SCHEDULE FOR 2016 (mark these on your calendar!)

These field trips are free and open to the public.

DAY	DATE	TRIP TITLE	LEADER(S)
Saturday	May 21	Butterflies of Bauer Brockway Barrens (Jackson Co.)	Mike Reese
Saturday	June 18	Butterflies and Wildflowers at Pleasant Valley Conservancy	Ann Thering Kathie and Tom Brock
Saturday	June 25	Butterflies of Cherokee Marsh	Karl & Dorothy Legler and Jan Axelson
Saturday	July 2	Butterflies of Sandhill Wildlife Area (Wood Co.)	Ron Arnold
Monday	July 4	Butterflies and Dragonflies of Swamp Lovers Preserve	Tod Highsmith Karl and Dorothy Legler
Saturday	July 9	Butterflies of Page Creek Marsh	Dan Sonnenberg
	TBA	Butterflies and Flowers of Shea Prairie	Eric Preston Dr. Douglas Buege
Saturday	July 23	Butterflies of Walking Iron County Park	Karl and Dorothy Legler
Saturday	August 6	Butterflies of Avoca/Blue River Area	Mike Reese

## 6 2016 NABA BUTTERFLY COUNT SCHEDULE

These are NABA's "4th of July" butterfly counts, open to the public. They are the butterfly analogue of "Christmas" Bird Counts held in winter. These butterfly counts are conducted exactly like Christmas Bird Counts: On one day, identify butterfly species and count individuals, staying within a 15 mile diameter circle. Various areas within the circle are visited. In North America, the data from 451 counts is collected and published annually. Some 15 NABA Butterfly Counts take place in Wisconsin each year. Below are ones that are connected with SWBA.

This is a good way to gain more experience with a range of butterflies. Whether experienced or novice, you are always welcome to participate. To join in, contact the coordinators (Karl and Dorothy Legler, karlndot@charter.net, (608) 643-4926).

(NABA charges a \$3 fee to participate in a count, to help defray the cost of publication.)

(For a list of additional Butterfly Counts in Wisconsin and elsewhere, visit NABA's Web site at [www.naba.org/counts/us\\_mx\\_map.html](http://www.naba.org/counts/us_mx_map.html) Contacts are Listed.)

COUNT NAME	DAY	DATE	COUNTY	NUMBER OF YEARS
Mud Lake	Friday	July 1	Columbia County	27
Dubuque (Wis. portion)	Sunday	July 10	Grant County	13
Trempealeau	Wednesday	July 13	Trempealeau County	26
Northern Kettle Moraine	Monday	July 18	Fond du Lac County	19

## 7 NABA 12th BIENNIAL MEMBERS' MEETING, 2016



Malachite

Every other year NABA members get together for outstanding butterflying somewhere in North America. In 2016 we will be meeting in Mission, TX at NABA's fabulous **National Butterfly Center**. The Biennial Meeting will visit great butterfly sites in the Lower Rio Grande River Valley. The 4-day event will be held on October 29 - November 1, 2016. (We will provide more information as it becomes available.)

**The Badger ButterFlyer flits to you every month in summer. The next issue will be in April.**

**Officers of SWBA:**

President: Dr. Douglas Buege  
[djbuege@gmail.com](mailto:djbuege@gmail.com)  
Vice-President: Karl Legler  
[karlndot@charter.net](mailto:karlndot@charter.net)  
Secretary: Dorothy Legler  
Treasurer: Ginny Nelson  
\*\*\*\*\*

**Other SWBA contributors:**

e-Newsletter Editor: Karl Legler  
[karlndot@charter.net](mailto:karlndot@charter.net)  
Webmaster: Dan Sonnenberg  
Butterfly Reporting: Mike Reese at  
[www.wisconsinbutterflies.org](http://www.wisconsinbutterflies.org)  
Speaker's Bureau: Dorothy Legler  
Dr. Douglas Buege  
NABA Liaison: Joan Braune

**SWBA**

The Southern Wisconsin Butterfly Association (SWBA) is a non-profit Wisconsin chapter of the North American Butterfly Association (NABA) which is the largest organization of people interested in butterflies. SWBA promotes public awareness, conservation and the enjoyment of butterflies through observation with close-focusing binoculars, chapter field trips, educational meetings, photography, butterfly gardening, monitoring and travel. SWBA's events are open to the public.

To become a member of SWBA simply join NABA. Membership benefits include 2 color quarterly magazines "American Butterflies" and "Butterfly Gardening". Please use the membership form on the SWBA Web site at <http://www.naba.org/chapters/nabawba/>

Our e-Newsletter, the Badger ButterFlyer, will be published monthly in spring to fall, and every other month in winter. Send any news notes to the editor, Karl Legler, at [karlndot@charter.net](mailto:karlndot@charter.net)

**To stop receiving this e-Newsletter simply send an email to the above editor's address.**