

Badger ButterFlyer

The e-Newsletter of the Southern Wisconsin Butterfly Association

MAY, 2017

WEB SITE: <http://www.naba.org/chapters/nabawba/>

1 NEXT FIELD TRIPS

Field Trips are free and open to the public.

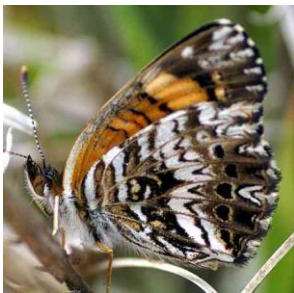
Mark your calendar!

Butterflies of Bauer-Brockway Barrens

(Jackson Co.)

Saturday, May 20

10:30 a.m. - 3:00 p.m.



Gorgone Checkerspot

The best place in the state to look for early butterflies in May is Jackson County. Butterfly expert **Mike Reese** will lead us in finding and observing many scarce and unusual species, many that only fly in May! We expect to find all 5 of the state's Elfins, including the very rare (and State Threatened) Frosted Elfin. We should find Olympia Marble, Gorgone Checkerspot, Cobweb Skipper, Dreamy and Sleepy Duskywings, etc. Over the past 9 years we have averaged 21 species. Bring binoculars if you have them, close-focusing ones work best. (A few extra pairs of binoculars are available.) Also, bring a bag lunch and water. A hat, long pants and long sleeves are

recommended.

Meet in Jackson Co. at 10:30 a.m. at the corner of West Bauer Road and Brockway Road. We will butterfly until 3:00 p.m. DIRECTIONS: From the intersection of I-94 and Hwy 54 in Black River Falls, go east on Hwy 54 approximately 3.8 miles to Brockway Road. Turn right on West Bauer Road and drive 3.8 miles to the intersection with North Brockway Road. (This area is about 2 1/4 hours northwest of Madison via I-94.)

Participants must PRE-REGISTER for this trip by either calling Mike at (920) 647-0196, or include your phone number in an email to mikereese@wisconsinbutterflies.org (so we can contact you in case of postponement or cancellation due to weather).

PAGE CREEK MARSH SNA TOUR AND BUTTERFLY WALK

(and optional hike up OBSERVATORY HILL SNA)

Sunday, June 4, 2017

10:00 a.m. to Noon

The Prairie Sands chapter of The Prairie Enthusiasts (TPE), in Marquette County, will hold two field trips. In the morning we will tour **Page Creek Marsh State Natural Area**, which is a large wetland surrounded by diverse uplands that provide habitat for a wide variety of plants, birds and insects. The creek winds through farmland

enhanced by remnants of native prairie and oak savanna. Oak uplands and prairies have been restored. Page Creek, because of its 652-acre size and habitat diversity, has been a reliable butterfly site. Co-leader **Dan Sonnenberg** (SWBA) will help identify the first summer fliers, such as Eastern Tiger Swallowtails, American Copper, Red-spotted



Olympia Marble

IN THIS ISSUE:

1. NEXT FIELD TRIPS.
 - Bauer-Brockway Barrens.
 - Tour of Page Creek Marsh
 - Butterflies and Wildflowers of Pleasant Valley Conservancy.
2. Summary of April Meeting.
3. Butterfly News
 - Oberhauser is new Director.
 - Collector convicted in Britain.
4. 2017 Field Trip Schedule.
5. NABA Butterfly Count Schedule.
6. Butterfly Reports: Is Wisconsin Being Invaded?

Purple, Hobomok Skipper and several others. Hiking is on old logging roads and intermittent, unmarked trails, and through tall-grass fields. Ticks are abundant, so wear long pants that can be tucked into socks. Wear sturdy hiking shoes; a hat is recommended. Bring water and binoculars (the closer they can focus the better). We have a couple of extra binoculars. No facilities on site. TPE co-leaders are Laurel Bennett (Page Creek stewardship coordinator), and David Hamel. You are invited to bring a lunch to eat with the group at nearby **John Muir Memorial Park** where there are tables and restrooms. (From intersection of K and D take 10th Road south, then go south on Cty F for 1 mile.) Call Dan (608) 225-0451) to **Pre-Register** or if you have a question



Red-spotted Purple

about the trip or if weather forecast is questionable. (The trip is canceled if it rains.)

DIRECTIONS FROM MADISON: take Interstate Highway I-39 north, past Portage, into Marquette County. Take Exit# 104 and follow County D east for 3.45 miles (going through Packwaukee, where D turns right and goes across the lake). Turn left (north) onto County K and go 0.86 mile to a gated entrance on the right (east) side of K. Park there.

OPTIONAL: If you can, join the hike up 300 foot high **Observatory Hill State Natural Area** in the afternoon (1:30 p.m.). It is in the process of extensive DNR oak savanna restoration. Charlie Church (TPE) will lead this moderately challenging trip up Observatory Hill, so be prepared for some steep portions and rock outcroppings. (Meet at the DNR parking lot on the south side of the hill along Gillette Ave.) Map: <http://dnr.wi.gov/topic/Lands/naturalareas/index.asp?SNA=223>

BUTTERFLIES AND WILDFLOWERS OF PLEASANT VALLEY CONSERVANCY

Saturday, June 17, 2017
10 a.m.– Noon.

Pleasant Valley Conservancy is a beautiful state natural area situated in the Driftless Area, with steep goat prairies, oak savanna, and a large, high quality marsh. This time of year we hope to see Baltimore Checkerspots and perhaps some wetland skippers. Other possible butterfly species include swallowtails, Silvery Checkerspot, fritillaries, and blues. All of these butterflies will have many wonderful native plants to nectar on this time of year. Led by **Dr. Douglas Buege** and **Tom and Kathy Brock**. Long pants, a hat, water, and hiking shoes are recommended. Bring binoculars—the closer they focus, the better! (We have a few extra binoculars.) If you would like, bring along a bag



Baltimore Checkerspot

lunch for after the field trip; dessert will be provided! (This is a joint trip of SWBA with Madison Audubon and The Prairie Enthusiasts.) Contact leaders only if you have a question about the trip: Douglas at (608) 441-9833 or Tom at (608) 238-5050 or

tdbrock@charter.net

DIRECTIONS: (4554 Pleasant Valley Road, Black Earth) Heading south into downtown Black Earth follow County Hwy F as it turns right (west). After a mile or so, F turns left (south). Continue on F for another 3 3/4 miles turning left onto Pleasant Valley Road. Drive 3/4 mile (past the buildings on the right) to the state natural area sign. Park off the road.

2 APRIL MEETING SUMMARY

NORTHERN BLUE

20 people attended SWBA's April Meeting to hear speaker Chelsea Gunther, of the Bureau of Natural Heritage Conservation, report on the research she and others have done on Northern Blue. The Endangered caterpillar food plant, Dwarf Bilberry, has been saved. But the Northern Blue has not been seen for a couple of years. (SWBA has made a donation to the Wisconsin Endangered Resources Fund.)

ELECTION OF OFFICERS

Dan Sonnenberg has run SWBA's website and now has taken over the Vice-President's duties, replacing Karl Legler, who has stepped down. Karl continues as Newsletter Editor :-> The elected Officers are:

President: Dr. Douglas Buege
Vice-President: Dan Sonnenberg
Secretary: Dorothy Legler
Treasurer: Ginny Nelson

VOLUNTEER OPPORTUNITY

Our long-time Treasurer, **Ginny Nelson**, will be retiring from this position later in this year so we are calling on our members for someone to volunteer to be Treasurer for SWBA. Ginny will help explain the duties of the Treasurer. If you can help out, contact the Nominating Committee Chairperson Tod Highsmith at (608) 242-1168 or at tohighsmith@me.com

3 BUTTERFLY NEWS

MONARCH RESEARCHER KAREN OBERHAUSER TO TAKE OVER AS DIRECTOR OF THE UW ARBORETUM!

The headline in the Daily Cardinal blared "Butterfly Researcher Metamorphosizes into New Arboretum Director."! Oberhauser is an Internationally renowned Monarch researcher, and a Professor in the Department of Fisheries, Wildlife and Conservation Biology at the University of Minnesota. She has studied Monarchs for more than 30 years. One of her important citizen science programs is the **Monarch Larva Monitoring Project**, which involves volunteers from across the United States and



Canada in monarch research. It was developed to collect long-term data on larval monarch populations and milkweed habitat. She has chaired the steering committee of the **Monarch Joint Venture**, which is a partnership of more than 50 federal and state agencies, non-governmental organizations, and academic programs that are working together to support and coordinate efforts to protect the monarch migration across the United States. She will become the new UW-Arboretum Director in October.

BUTTERFLY POACHER ARRESTED AND CONVICTED IN BRITAIN

A butterfly collector who illegally captured and killed specimens of Britain's rarest endangered butterfly, the Large Blue, has been apprehended and sentenced. The Large Blue is globally endangered and has a remarkable life cycle. Eggs are laid on flower buds. The caterpillars burrow into the flower heads and eventually drop to the ground where a single species of ants are attracted to secretions from the caterpillar. The ants then put the caterpillars into their brood chamber and the caterpillars feed on ant larva. The butterflies emerge in the middle of summer. Because of this exceptional life cycle *the butterflies cannot be bred in captivity*. As a result, illegally obtained dead Large Blues can sell for up to \$390 each. A butterfly collector was spotted as he climbed over locked gates and used a small net to



Large Blue is globally endangered.

capture Large Blues at two protected sites. The Large Blues are protected by Britain's Conservation of Habitats and Species Regulations of 2010. (The collector had previously admitted possessing other protected species of butterfly.) Police raided his home and found a large collection and the dead Large Blues.

The collector received a 6-month jail sentence, suspended for 2 years. He was ordered to do 250 hours of unpaid work and was given a 5-year criminal behavior order banning him from 3 nature reserves. Two display cases of butterflies were seized from his home and were ordered forfeited and will be given to a museum. Apparently any further collecting of protected species would lead directly to jail!

Thanks to Stan Rehm for calling our attention to this story.

4 SWBA FIELD TRIP SCHEDULE 2017

(mark these on your calendar!)

These field trips are free and open to the public.

NOTE: We have not previously gone to Page Creek Marsh at this time of year (June 4).

DAY	DATE	TRIP TITLE	LEADER(S)
Saturday	May 20	Butterflies of Bauer Brockway Barrens (Jackson Co.)	Mike Reese
Sunday	June 4 NEW	Tour of Page Creek Marsh and Butterfly Walk	Dan Sonnenberg
Saturday	June 17	Butterflies and Wildflowers at Pleasant Valley Conservancy	Dr. Douglas Buege Kathie and Tom Brock
Saturday	June 24	Butterflies of Cherokee Marsh	Karl & Dorothy Legler and Jan Axelson
Saturday	July 1 NEW	Butterflies of Rocky Run Oak Savanna State Natural Area	Karl & Dorothy Legler
Tuesday	July 4	Butterflies and Dragonflies of Swamp Lovers Preserve	Tod Highsmith Karl and Dorothy Legler
Saturday	July 8	Madison Butterfly Count (ADDED to schedule)	Karl and Dorothy Legler
Saturday	July 15	Butterflies and Flowers of Schurch-Thomson	Dr. Douglas Buege Rich Henderson
Saturday	July 29 NEW	Butterflies of Kalscheur Oak Savanna	Dan Sonnenberg Rich Henderson
Saturday	August 5	Butterflies of Avoca/Blue River Area	Dan Sonnenberg

5 2017 NABA BUTTERFLY COUNT SCHEDULE

This is a good way to gain more experience with a range of butterflies. Whether experienced or novice, you are always welcome to participate. To join in, or if you have a question, contact the coordinators (Karl and Dorothy Legler, karlndot@charter.net, (608) 643-4926).

(NABA charges a \$3 fee to participate in a count, to help defray the cost of publication.)

(For a list of additional Butterfly Counts in Wisconsin and elsewhere, visit NABA's Web site at www.naba.org/counts/us_mx_map.html Contacts are Listed.)

COUNT NAME	DAY	DATE	COUNTY	THIS YEAR WILL BE THE
Mud Lake	Saturday	July 1	Columbia Co.	29th year
Madison	Saturday	July 8	Dane Co.	27th year
Dubuque (Wis. portion)	Sunday	July 9	Grant Co.	15th year
Trempealeau	Tuesday	July 11	Trempealeau Co.	28th year
Northern Kettle Moraine	Friday	July 14	Fond du Lac Co.	21st year

6 BUTTERFLY REPORTS: IS WISCONSIN BEING INVADED ??

Looking at the butterfly reports for April on Mike Reese's butterfly website we find 180 reports on many hundreds of species. But two species stand out because they are migrants into the state: Common Buckeye and Red Admiral. Normally April is rather early to talk about migrants.

The **Common Buckeye's** average date of first appearance in Wisconsin in the past 11 years

is June 5. But in 8 of those years the arrival date was June 5 or later! Only 3 years had arrivals before June 5: In 2007 Buckeye was 14 days early, in 2012 Buckeye was 53 days early and this spring Buckeye was 49 days early! This year, in 2017, the early record was April 16, but with 3 more seen later in April. This surpasses the 2012 record which makes this the *earliest strong influx* of Common

Buckeyes in at least 11 years. So this portends a possible strong Common Buckeye presence in the state again this year. The case of **Red Admirals** is even more interesting. Red Admirals are well known for the pericodic explosion of their population and northward migration. This previously happened in 1990, 2001, 2007, 2010 and 2012. In terms of early migration as measured by the average number of Red Admirals per report, in spring up through May 1, the year 2017 is the *third highest* of the past 11 years. Only invasion years 2012 and 2007 were stronger in this early part of the season. So it appears that possibly another substantial invasion is underway bringing Red Admirals to Wisconsin. Here's a report from Iowa State University on April 10, 2017:



Red Admiral

"Look out for Red Admirals! Large numbers of these butterflies have been migrating northward across the upper Midwest and southern Ontario, Canada in the last few days in the wake of a strong flow of warm, moist air from the Gulf of Mexico. . . . This wave of butterflies has appeared . . . within a relatively short time, between April 6 and April 9, suggesting a sudden incursion from elsewhere. To further support this possibility, there has been one report of a steady stream of northbound Red Admirals and Painted Ladies throughout the day on April 8 in Polk County in central Iowa. -- Royce Bitzer, April 10, 2017" <http://vanessa.ent.iastate.edu/> However -- we have had a prolonged period of cool weather that has temporarily slowed things down a bit -- so STAY TUNED.

"Red Admirals Migrating through the upper Midwestern U.S.

[Keep sending reports to wisconsinbutterflies.org](http://wisconsinbutterflies.org)

The ButterFlyer flits to you every month in summer. The next issue will be in June.

Officers of SWBA:

President: Dr. Douglas Buege
djbuege@gmail.com
 Vice-President: Dan Sonnenberg
dsonnenberg60@gmail.com
 Secretary: Dorothy Legler
 Treasurer: Ginny Nelson

Other SWBA contributors:
 e-Newsletter Editor: Karl Legler
karlndot@charter.net
 Webmaster: Dan Sonnenberg
 Butterfly Reporting: Mike Reese at
www.wisconsinbutterflies.org
 Speaker's Bureau: Dorothy Legler
 Dr. Douglas Buege
 NABA Liaison: Joan Braune
 Chair of Nominating Committee:
 Tod Highsmith

SWBA

The Southern Wisconsin Butterfly Association (SWBA) is a non-profit Wisconsin chapter of the North American Butterfly Association (NABA) which is the largest organization of people interested in butterflies. SWBA promotes public awareness, conservation and the enjoyment of butterflies through observation with close-focusing binoculars, chapter field trips, educational meetings, photography, butterfly gardening, monitoring and travel. SWBA's events are open to the public.

To become a member of SWBA simply join NABA. Membership benefits include 2 color quarterly magazines "American Butterflies" and "Butterfly Gardening". Please use the membership form on the SWBA Web site at <http://www.naba.org/chapters/nabawba/>

Our e-Newsletter, the **Badger ButterFlyer**, will be published monthly in spring to fall, and every other month in winter. Send any news notes to the editor, Karl Legler, at karlndot@charter.net

To stop receiving this e-Newsletter simply send an email to the above editor's address.