

Badger ButterFlyer

The e-Newsletter of the Southern Wisconsin Butterfly Association
which is a chapter of NABA (North American Butterfly Association)

MAY, 2018

WEB SITE: <http://www.naba.org/chapters/nabawba/>

1 NEXT FIELD TRIPS

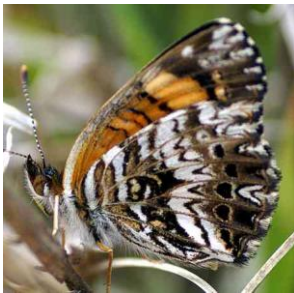
Field Trips are free and open to the public.

Mark your calendar!

Butterflies of Bauer-Brockway Barrens (Jackson Co.)

Saturday, May 19

10:30 a.m. - 3:00 p.m.



Gorgone Checkerspot

The best place in the state to look for early butterflies in May is Jackson County. **Douglas Buege** will lead us in finding and observing many scarce and unusual species, many that only fly in May! We hope to find all 5 of the state's Elfins, including the very rare (and State Threatened) Frosted Elfin. We should find Olympia Marble, Gorgone Checkerspot, Cobweb Skipper, Dreamy and Sleepy Duskywings, etc. Over the past 9 years we have averaged 21 species. Bring binoculars if you have them, close-focusing ones work best. (A few extra pairs of binoculars are available.) Also, bring a bag lunch and water. A hat, long pants and long sleeves are recommended.

Meet in Jackson Co. at 10:30 a.m. at the corner of West Bauer Road and Brockway Road. We will butterfly until 3:00 p.m. **DIRECTIONS:** From the intersection of I-94 and Hwy 54 in Black River Falls, go north on Hwy 54 approximately 0.4 miles and turn right on West Bauer Road. Drive 3.8 miles to the intersection with North Brockway Road. Park at the intersection. (This area is about 2 hours, or so, northwest of Madison via I-94.)

Participants must PRE-REGISTER for this trip by either calling Karl Legler at 608 228-0743, or include your phone number in an email to karlndot@charter.net (so we can contact you in case of postponement or cancellation due to weather).



Olympia Marble

BUTTERFLIES AND WILDFLOWERS OF PLEASANT VALLEY CONSERVANCY

Saturday, June 16, 2018

10 a.m.– Noon.

Pleasant Valley Conservancy is a beautiful state natural area situated in the Driftless Area, with steep goat prairies, oak savanna, and a large, high quality marsh. This time of year we hope to see Baltimore Checkerspots and perhaps some wetland skippers. Other possible butterfly species include swallowtails, Silvery Checkerspot,



Baltimore
Checkerspot

fritillaries, and blues. All of these butterflies will have many wonderful native plants to nectar on this time of year. Led by **Ann Thering** and **Tom and Kathy Brock**. Long pants, a hat, water, and hiking shoes are recommended. Bring binoculars—the closer they focus, the better! (We have a few extra binoculars.) If you would like, bring along a bag lunch for after the field trip. (This is a

IN THIS ISSUE:

1. NEXT FIELD TRIPS.
 - Bauer-Brockway Barrens.
 - Pleasant Valley Conservancy.
 - Cherokee Marsh.
2. Summary of SWBA Meeting.
3. If You Missed the Meeting...
4. NABA Butterfly Count Schedule.
5. 2018 Field Trip Schedule.
6. NABA Biennial Meeting: Florida!
7. Swift Guide to Butterflies of Mexico and Central America.
8. NEW Butterfly Gardening book.

joint trip of SWBA with Madison Audubon and The Prairie Enthusiasts.) Contact leaders only if you have a question about the trip: Ann at (608) 836-1097 or Tom at (608) 238-5050 or tdbrock@charter.net

DIRECTIONS: (4554 Pleasant Valley Road, Black Earth) Heading south into

downtown Black Earth follow County Hwy F as it turns right (west). After a mile or so, F turns left (south). Continue on F for another 3 3/4 miles turning left onto Pleasant Valley Road. Drive 3/4 mile (past the buildings on the right) to the state natural area sign. Park off the road.

BUTTERFLIES OF CHEROKEE MARSH

Saturday, June 23

10:00 a.m. to Noon

On this morning walk we'll observe and learn about butterflies, those small but exquisitely beautiful creatures that dance around us in summer. **Karl and Dorothy Legler and Janet Battista will lead** this 2 hour walk at Cherokee Marsh on the northeast side of Madison. We will observe a variety of butterflies as they take nectar from wildflowers, and learn about their identification, behavior, and lifestyle. Bring binoculars if you have them — close-focusing ones work best. We have a few extra pairs of binoculars. It's best to wear long pants and a hat for protection from the sun.



Great Spangled Fritillary

This is a joint trip of the Southern Wisconsin Butterfly Association, with Madison Audubon Society, and Friends of Cherokee Marsh.

Meet at 10:00 a.m. **DIRECTIONS:** On the north side of Madison take Northport Drive (Highway 113) then turn north on Sherman Ave. Meet at the Cherokee Marsh parking lot at the north end of Sherman Ave. (6098 N Sherman Ave, Madison, WI.) Call Karl at (608) 643-4926 or email karlindot@charter.net, only if you have a question about the trip.

2 SWBA MEETING SUMMARY

There was a nice turnout of 25 people for the May SWBA Meeting. The new NABA book on Butterfly Gardening was on display, along with Jeff Glassberg's 2nd edition of Swift Guide to Butterflies of Mexico and Central America. (If you missed Dorothy Legler's program on Attracting Butterflies to your Yard, it will also be presented on Thursday, May 31 at Bellville public library. The program is given as part of SWBA's Speaker's Bureau. See Article 3.)

ELECTION OF OFFICERS

Karl Legler has replaced Dan Sonnenberg, who unexpectedly passed away in November of last year. The current Officers are:

President: Dr. Douglas Buege

Vice-President: Karl Legler

Secretary: Dorothy Legler

Treasurer: Ginny Nelson

3 IF YOU MISSED THE MEETING . . .

**PUBLIC PROGRAM IN BELLVILLE, WI:
ATTRACTING BUTTERFLIES TO YOUR YARD**

by Dorothy Legler

**6:30 p.m. at the Belleville public library on Thursday, May 31.
 130 S. Vine Street, Belleville, WI**



Eastern Tiger Swallowtail

Create a Butterfly Garden in your yard! Butterflies are a splendid addition to any garden! A Butterfly Garden will help to stem the loss of habitat that is contributing to a decline in butterfly populations. Dorothy will discuss the needs of Wisconsin's interesting and beautiful butterflies, their food plants and nectar sources, butterfly behavior, and provide ideas for attracting butterflies to your yard.

4 NABA BUTTERFLY COUNT SCHEDULE

These are similar to Christmas Bird Counts. This is a good way to gain more experience with a range of butterflies. Whether experienced or novice, you are always welcome to participate. To join in, or if you have a question, contact the coordinators (Karl and Dorothy Legler, karlndot@charter.net, (608) 643-4926). (NABA charges a \$3 fee to participate in a count, to help defray the cost of publication.) (For a list of additional Butterfly Counts in Wisconsin and elsewhere, visit NABA's Web site at www.naba.org/counts/us_mx_map.html Contacts are Listed.)

COUNT NAME	DAY	DATE	COUNTY	THIS YEAR WILL BE THE
Mud Lake	Monday	July 2	Columbia Co.	30th year
Oconto		TBA	Oconto Co.	4th year
Madison	Sunday	July 8	Dane Co.	28th year
Trempealeau	Tuesday	July 10	Trempealeau Co.	29th year
Northern Kettle Moraine	Friday	July 13	Fond du Lac Co.	22nd year
Dubuque (Wis. portion)	Saturday	July 14	Grant Co.	16th year

5 FIELD TRIP SCHEDULE FOR 2018 (mark these on your calendar!)

These field trips are free and open to the public.

DAY	DATE	TRIP TITLE	LEADER(S)
Saturday	May 19	Butterflies of Bauer Brockway Barrens (Jackson Co.)	Douglas Buege
Saturday	June 16	Butterflies and Wildflowers at Pleasant Valley Conservancy	Ann Thering Kathie and Tom Brock
Saturday	June 23	Butterflies of Cherokee Marsh	Karl & Dorothy Legler and Janet Battista
Wednesday	July 4	Butterflies and Dragonflies of Swamp Lovers Preserve	Tod Highsmith Karl and Dorothy Legler
Saturday	July 7	Butterflies of Sandhill Wildlife Area (Wood Co.)	Ron Arnold
Sunday	July 8	Madison Butterfly Count	Karl and Dorothy Legler
Saturday	July 21	Butterflies and Flowers of Shea Prairie	Karl and Dorothy Legler Rich Henderson
Saturday	August 4	Butterflies of the Avoca and Blue River Area	Mike Reese

6 North American Butterfly Association 13th Biennial Members' Meeting Tallahassee, FL September 16-19, 2018

Every other year NABA holds a meeting and field trips somewhere in the U.S. Tallahassee is a treasure trove of riches for those who love the outdoors and nature. The Panhandle has been identified as one of the five richest biodiversity hotspots in North America.

The Apalachicola River Basin, just to the west of Tallahassee, has the highest species diversity of reptiles and amphibians in the U.S. and an estimated 1300 plant species, with 127 of them endemic to the Basin, including dozens of carnivorous plant species, more than any other state. The Apalachicola NF, just south of Tallahassee, is part of one of the largest contiguous blocks of public lands east of the Mississippi River. Just a 30-minute drive from Tallahassee lies the Gulf of Mexico, famous for its beaches and seafood. With over 120 species of butterflies within the vicinity, Tallahassee will give attendees of the 13th biennial NABA meeting an opportunity to experience the riches of natural Florida.

The cost for the 4 days is \$295, which includes 3 days of field trips and Workshops, 3 box lunches and 2 banquet dinners. (Accommodations are extra.) Daytime temperatures average in the upper 80's.

TENTATIVE SCHEDULE

Sunday, September 16:

3:30-7:30 p.m. Registration
7:30-9:00 p.m. Welcome & Program:
"An Introduction to Central Florida Panhandle
Butterflies" by Dean and Sally Jue

Monday, September 17:

8:00-8:45 a.m. Workshops (3 concurrent topics)
9:15 a.m. Field Trips depart
5:00 p.m. Field Trips return
6:00-7:00 p.m. Social Hour, Book signing, Exhibits
7:00-9:00 p.m. Banquet and Keynote Speaker

Tuesday, September 18:

8:00-8:45 a.m. Workshops (3 concurrent topics)
9:15 a.m. Field Trips depart
5:00 p.m. Field Trips return
6:00-7:00 p.m. Social Hour, Book signing, Exhibits
7:00-9:00 p.m. Banquet and Featured Speaker

Wednesday, September 19:

8:00 a.m. Field Trips depart
3:00 p.m. Field Trips return
3:00-3:30 p.m. Meeting Finale

To register or get more information, click on this link: <http://www.naba.org/meeting.html>

7 NEW BOOK: A SWIFT GUIDE TO BUTTERFLIES OF MEXICO AND CENTRAL AMERICA (2nd Edition) by Jeffrey Glassberg.

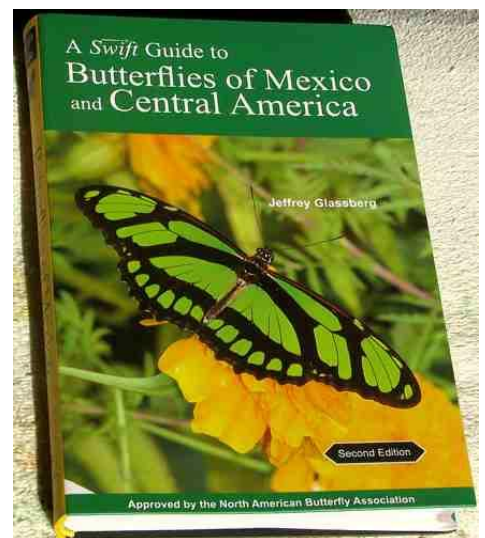
"A fully revised Second Edition of the most detailed, comprehensive, and user-friendly photographic field guide to the butterflies of Mexico and Central America.

- Covers more than **2,000 species**.
- More than **1500 new photos**.
- Beautifully illustrated with **3,800 color photographs**.
- Field marks and arrows that show you exactly what to look for are embedded in the photographs for swift access.
- Detailed range maps."

8" x 5.8" 304 pages. Available on Amazon for **\$27.61** + shipping.



Zebra Swallowtail



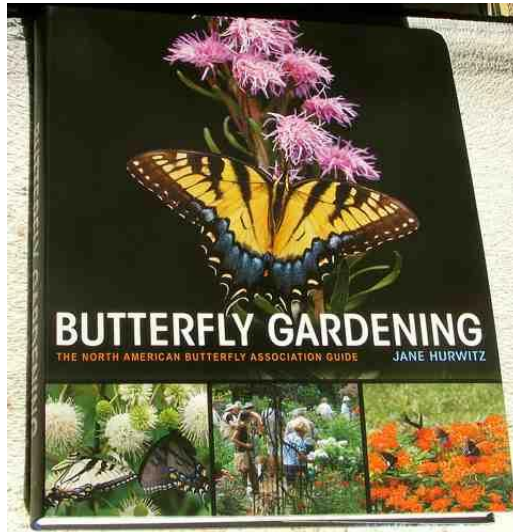
8 NEW BOOK: Butterfly Gardening. The North American Butterfly Association Guide by Jane Hurwitz.

This book was published in April. The author is Jane Hurwitz the editor of *Butterfly Gardening* magazine and the former director of the Butterfly Garden and Habitat Program of NABA.

"An indispensable and lavishly illustrated guide to creating a garden that attracts and sustains butterflies

Butterfly gardening creates habitats that support butterflies, connecting us with some of the most beautiful creatures in the natural world and bringing new levels of excitement and joy to gardening. In this engaging and accessible guide, lavishly illustrated with more than two hundred color photographs and maps, accomplished butterfly gardener Jane Hurwitz presents essential information on how to choose and cultivate plants that will attract a range of butterflies to your garden and help sustain all the stages of their life cycles.

An indispensable resource for aspiring and experienced butterfly gardeners alike, *Butterfly Gardening* is the most gardener-friendly source on the subject, covering all the practical details needed to create a vibrant garden habitat that



fosters butterflies. It tells you which plants support which butterflies, depending on where you live; it describes what different butterflies require in the garden over the course of their lives; and it shows you how to become a butterfly watcher as well as a butterfly gardener.

While predominantly recommending regionally native plants, the book includes information on non-native plants. It also features

informative interviews with experienced butterfly gardeners from across the United States. These gardeners share a wealth of information on plants and practices to draw butterflies to all kinds of gardens--from small suburban gardens to community plots and larger expanses.

Whether you are a gardener who wants to see more butterflies in your garden, a butterfly enthusiast who wants to bring that passion to the garden, or someone who simply wants to make their garden or yard friendlier to Monarchs or other butterflies, this is a must-have guide." **10.5" x 8.5" 288 pages. \$22.80**

The ButterFlyer flits to you every month in summer. The next issue will be in June.

Officers of SWBA:

President: Dr. Douglas Buege

djbuege@gmail.com

Vice-President: Karl Legler

karlndot@charter.net

Secretary: Dorothy Legler

Treasurer: Ginny Nelson

Other SWBA contributors:

e-Newsletter Editor: Karl Legler

karlndot@charter.net

Webmaster: TBA

Butterfly Reporting: Mike Reese at

www.wisconsinbutterflies.org

Speaker's Bureau: Dorothy Legler

Dr. Douglas Buege

NABA Liaison: Joan Braune

SWBA

The Southern Wisconsin Butterfly Association (SWBA) is a non-profit Wisconsin chapter of the North American Butterfly Association (NABA) which is the largest organization of people interested in butterflies. SWBA promotes public awareness, conservation and the enjoyment of butterflies through observation with close-focusing binoculars, chapter field trips, educational meetings, photography, butterfly gardening, monitoring and travel. SWBA's events are open to the public.

To become a member of SWBA simply join NABA. Membership benefits include 2 color quarterly magazines "American Butterflies" and "Butterfly Gardening". Please use the membership form on the SWBA Web site at <http://www.naba.org/chapters/nabawba/>

Our e-Newsletter, the Badger ButterFlyer, will be published monthly in spring to fall. Send any news notes to the editor, Karl Legler, at karlndot@charter.net

To stop receiving this e-Newsletter simply send an email to the above editor's address.