

Badger ButterFlyer

The e-Newsletter of the Southern Wisconsin Butterfly Association

A chapter of NABA (North American Butterfly Association) **SEPTEMBER, 2019**

WEB SITE: <http://www.naba.org/chapters/nabawba/>

1 NEXT SWBA MEETING

TUESDAY, OCTOBER 1, 2019.

7:00 P.M. Fitchburg Public Library.

5530 Lacy Road, Fitchburg, WI (Mark your calendar!)

A TRIP TO THE MONARCH WINTER SANCTUARY IN MEXICO!

Dave Hogg, retired UW-Madison Entomologist, visited the Monarch's Mexican wintering grounds and got to see the highest population of Monarchs in the past 9 years! Through photos and video clips, Dave will show what it is like to visit one of the premier nature sites in the world.

PLUS PRESENTATIONS ON ADDITIONAL TOPICS.

Everyone is invited to attend this free program. The meeting will last from 7:00 p.m. to 8:30 p.m. We will have displays, books, handouts and plenty of time to enjoy *delicious* snacks and refreshments, and talk with our speakers and other butterfly enthusiasts.

DIRECTIONS TO THE MEETING:

From the Beltline, take Fish Hatchery Road (= County D) south for about 2.4 miles and turn left (east) at Lacy Rd. After 1 block the library is on the left, at the intersection of Lacey Rd. and Research Park Rd. Continue on Lacy and take the entrance road around the far (east) end of the library to access parking near the entrance, (behind the library). **OR** if you prefer to park underground, turn left (north) onto Research Park Rd and then turn right into the ramp leading to the underground parking lot.

IN THIS ISSUE:

1. NEXT SWBA MEETING:

• **TUESDAY, OCTOBER 1, 2019.**

7:00 P.M. Fitchburg Library.

2. Highlights of Recent Field Trips.

3. Recent Butterfly Sightings!

4. Texas Butterfly Festival 2019.



2 HIGHLIGHTS OF RECENT FIELD TRIPS:

Highlights of the annual Madison NABA Butterfly Count

This count is held within a 15 mile diameter circle centered on Madison. This was the 29th year of the count!

It was conducted by SWBA observers using binoculars. 8 counters counted for **21.2 party-hours** and found **509 butterflies of 34 species**. **Monarchs** were highest ever (116) presumably because of plentiful milkweed. Scarce species found were the uncommon **Hickory Hairstreak** and **Little Yellow**, the rare immigrant, **Gray Hairstreak**, and the very rare immigrant, **Reakirt's Blue!** We had only our third record for Little Yellow and the highest count.

Gray Hairstreak was new to the count! Thanks to all the counters (Dave Fallow, Peter Fissel, Karl and Dorothy Legler, Ginny Nelson, Pat Ready, Pamela Skaar, and Edgar Spalding) for an outstanding count!



Gray Hairstreak. Our only Hairstreak that may show its upper side!
Photo by Pat Ready.



Hickory Hairstreak.
Photo by Pat Ready.



Reakirt's Blue, a very rare Southern immigrant.
Photo by Pat Ready.



Underside of Reakirt's Blue.
Photo by Karl Legler.

Butterflies seen on the Madison Count:

Black Swallowtail 5	'Summer' Spring Azure 9	Little Wood-Satyr 5
Cabbage White 36	Great Spangled Fritillary 43	Common Wood-Nymph 18
Clouded Sulphur 24	Pearl Crescent 8	Monarch 116
Orange Sulphur 6	Baltimore Checkerspot 22	Silver-spotted Skipper 27
Little Yellow 3	Question Mark 1	Least Skipper 29
Coral Hairstreak 3	Eastern Comma 1	European Skipper 2
Edwards' Hairstreak 2	Mourning Cloak 2	Peck's Skipper 1
Banded Hairstreak 34	American Lady 10	Northern Broken-Dash 4
Hickory Hairstreak 1	Painted Lady 9	Mulberry Wing 9
Gray Hairstreak 1	Red Admiral 66	Dion Skipper 1
Reakirt's Blue 1	Tawny Emperor 1	
Eastern Tailed-Blue 3	Eyed Brown 4	

Highlights of Kalscheur Oak Savannah Field Trip

Led by Douglas Buege and Rich Henderson. The weather this year has been very volatile and so have been the forecasts. The forecast for this field trip was 60% rain chance, little sunshine and at starting time the heat index was 100°! About 11 people showed up. The sky was clear and the sun was shining! We found 20 species of butterflies. The **Silver-bordered Fritillary** and the **Black Dash** are wetland species.



Silver-bordered Fritillary prefers wetter habitat than Meadow Fritillary.

Black Swallowtail 2	Painted Lady 1
Cabbage White 3	Red Admiral 1
Eastern Tailed-Blue 1	Common Buckeye 1
Summer Azure 1	Pearl Crescent many
Aphrodite Fritillary 2	Red-spotted Purple 1
Great Spangled Fritillary 2	Common Wood-Nymph many
Meadow Fritillary 1	Monarch 15
Silver-bordered Fritillary 1	Black Dash 3
Edward's Hairstreak 3	Dun Skipper 3
American Lady 2	Long Dash 1

Highlights of Yahara Heights Field Trip

This was held on July 27. We found three migrant species (not permanent residents in Wisconsin), **Common Buckeye**, **Painted Lady** and we were pleased to find the five **Little Yellows** including a mating pair!



Little Yellows mating. Although immigrants cannot survive our winter, they can breed here if they can find the food plant the caterpillar needs (Partridge Pea).

Black Swallowtail 5	Painted Lady 1
Cabbage White 3	Red Admiral 1
Clouded Sulphur 2	Common Buckeye 1
Little Yellow 5	Viceroy 6
Eastern Tailed-Blue 9	Monarch 23
Pearl Crescent 7	Silver-spotted Skipper 2

Highlights of Field Trip to the Avoca and Blue River Areas of the Lower Wisconsin State Riverway

The 13th annual field trip to the Lower Wis State Riverway on August 3 was led by Douglas Buege. Sixteen observers found 215 butterflies of 27 species.

Silver-spotted Skipper (11) and **Least Skipper** (60) had their highest numbers of the 13 years. **Monarch** numbers (28) were their 3rd highest. **Silvery Checkerspot** was new to this trip. Migrants/immigrants were about average (**Red Admiral**, **Painted Lady**, **Buckeye**, and **Little Yellow**). A **Russet-tipped Clubtail** (dragonfly) was



Common Roadside-Skipper.



Russet-Tipped Clubtail. They are occasionally seen near the Wisconsin and Mississippi Rivers.

photographed by Dorothy Legler, Pat Ready and Steve Thiessen. Thanks to all the participants!

Giant Swallowtail 5	Meadow Fritillary 1	Hackberry Emperor 4
Eastern Tiger Swallowtail 7	Silvery Checkerspot 1	Common Wood-Nymph 9
Cabbage White 6	Pearl Crescent 21	Monarch 28
Clouded Sulphur 4	American Lady 1	Silver-spotted Skipper 11
Orange Sulphur 1	Painted Lady 6	Common Sootywing 3
Little Yellow 19	Red Admiral 4	Least Skipper 60
American Copper 4	Common Buckeye 2	Tawny-edged Skipper 3
Eastern Tailed-Blue 8	Red-spotted Purple 3	Dun Skipper 1
Great Spangled Fritillary 1	Viceroy 1	Common Roadside-Skipper 3

Highlights of Sauk Prairie Recreation Area Field Trip

This field trip of the Southern Wisconsin Butterfly Association was led by Karl and Dorothy Legler on August 10. There were 24 participants. We found 218 butterflies of 19 species. **Painted Lady**, a migrant, was the most common butterfly! The most astonishing find was the **Reakirt's Blue**, a very rare immigrant from the Southwest. The Reakirt's Blue photo and the

Bronze Copper photo are new photo records for Sauk County. Amazingly, out of the three sightings of Reakirt's Blue in Wisconsin this year, two of them occurred on two SWBA field trips!! Also note the photo of the **black female Eastern Tiger Swallowtail** which characteristically shows the underlying tiger stripes on the underside of the hindwing.



Reakirt's Blue, a very rare immigrant. Photo by Jim Otto.



Eastern Tiger Swallowtail. Some females are black because they defend themselves by mimicking the appearance of the poisonous Pipevine Swallowtail. But the underlying Tiger stripes are still revealed on the underside of the hindwing. Photo by Pat Ready.



Bronze Copper. Photo by Lester Doyle.

Black Swallowtail	6	Reakirt's Blue	1	Red-spotted Purple	2
Giant Swallowtail	1	Eastern Tailed-Blue	25	Viceroy	4
Eastern Tiger Swallowtail	4	Summer Azure	3	Monarch	20
Cabbage White	8	Meadow Fritillary	25	Silver-spotted Skipper	8
Clouded Sulphur	20	Pearl Crescent	24	Least Skipper	10
Orange Sulphur	5	Painted Lady	50		
Bronze Copper	1	Common Buckeye	1		

3 BUTTERFLIES REPORTED ON wisconsinbutterflies.org

Migrant and immigrant butterflies cannot survive Wisconsin's winter, but wander northward and breed in Wisconsin--if they can find their caterpillar food plant! Some immigrant species simply die out in winter but some species are known to migrate in the fall, returning to the South, e.g. Monarch, Red Admiral, Painted Lady, Common Buckeye, etc. Below is a list of this year's migrant or immigrant species, ranked by the number of reports, that included the species, received by wisconsinbutterflies.org so far this year. (To put things in perspective, **a total of 1,484 butterfly reports have been received this year**, up through August.)

Some of these immigrants will continue to straggle into (and out of) the state in September. And some new ones may yet show up. So don't put away your binoculars yet! Good luck!



Dainty Sulphur. Recognized even in flight by its very small size.



American Snout. Recognized by the very long "nose" and squared-off tip of the forewing. The nose is actually side-by-side "palps" which provide butterflies with a garage to store the coiled up proboscis. This long nose makes the Snout look more leaf-like.



Fiery Skipper. It has small dark spots on the underside of the hindwing.

(I avoided counting duplicate sightings in the same area.)

SPECIES	FIRST REPORT	Number of Reports in Aug.	2019 REPORTS THRU AUG.
Monarch	May 14	Many	Many
Red Admiral	April 8	Some	Many
Painted Lady	April 19	Many	Many
Common Buckeye	April 20	Many	Many
Fiery Skipper	July 25	30	33
Little Yellow	July 1	9	19
American Snout	June 27	13	18
Dainty Sulphur	July 21	10	12
Variiegated Fritillary	June 26	5	10
Gray Hairstreak	May26	2	10
Pipevine Swallowtail	July 28	5	6
Sachem	July 30	4	5
Checkered White	July 3	2	5
Common Checkered-Skipper	July 3	1	4
Reakirt's Blue	July 7	1	3
Zebra Swallowtail	June 27	0	2
Funereal Duskywing	July 23	0	1

Keep sending reports to www.wisconsinbutterflies.org

4 2019 24th Annual TEXAS BUTTERFLY FESTIVAL

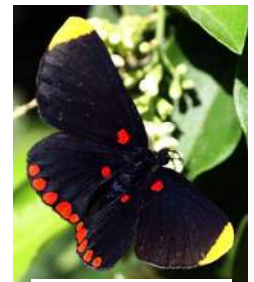
SATURDAY, NOV. 2 - TUESDAY, NOV. 5, 2019



This is the premier butterfly event in the country. It is run by **NABA's National Butterfly Center** in Mission, Texas. The million-dollar building was opened in 2010. NABA's purpose in acquiring the 100 acre property adjacent to the Rio Grande River and Bentsen State Park was to preserve a superlative site for butterflying. It is located in the southern-most tip of Texas, in the Lower Rio Grande Valley (LRGV - an area about 120 miles long by 20 miles wide) which is the most productive butterfly-finding area in the United States. The climate with mild winters results in a rich diversity of plants and animals with a southern affinity, many of which do not occur farther north. The LRGV is home to more than 1,200 different species of plants, 500 species of birds, 200 vertebrate species, roughly 300 species of butterflies, and over 90 species of dragonflies!



Long-tailed Skipper



Red-bordered Pixie

Attendees will spend 3 days exploring renowned public lands and private properties with world-class trip leaders and expert guides. The Festival is taking place during prime butterfly season, when you may reasonably expect to see more than 60 species in a day. Proceeds from the Butterfly Festival go to NABA's National Butterfly Center.

FOR MORE INFORMATION OR TO REGISTER, GO TO THE WEBSITE:

<http://www.texasbutterflyfestival.com/>

Facebook: <https://www.facebook.com/TexasButterflyFestival>

The ButterFlyer flits to you every month in summer. The next issue will be in APRIL, 2020.

Officers of SWBA:

President: Dr. Douglas Buege
djbuege@gmail.com
Vice-President: Karl Legler
karlndot@charter.net
Secretary: Dorothy Legler
Treasurer: Fred Dike

Other SWBA contributors:

e-Newsletter Editor: Karl Legler
karlndot@charter.net
FIELD TRIPS COORDINATOR:
Peter Fissel
Webmaster: Karl Legler
Butterfly Reporting: Mike Reese at
www.wisconsinbutterflies.org
Speaker's Bureau: Dorothy Legler
Dr. Douglas Buege
NABA Liaison: Joan Braune

SWBA

The Southern Wisconsin Butterfly Association (SWBA) is a non-profit Wisconsin chapter of the North American Butterfly Association (NABA) which is the largest organization of people interested in butterflies. SWBA promotes public awareness, conservation and the enjoyment of butterflies through observation with close-focusing binoculars, chapter field trips, educational meetings, photography, butterfly gardening, monitoring and travel. SWBA's events are open to the public.

To become a member of SWBA simply join NABA. Membership benefits include 2 color quarterly magazines "American Butterflies" and "Butterfly Gardening". Please use the membership form on the SWBA Web site at <http://www.naba.org/chapters/nabawba/>

Our e-Newsletter, the Badger ButterFlyer, will be published monthly in spring to fall. Send any news notes to the editor, Karl Legler, at karlndot@charter.net

To stop receiving this e-Newsletter simply send an email to the above editor's address.