

# Badger ButterFlyer

The e-Newsletter of the Southern Wisconsin Butterfly Association

A chapter of NABA (North American Butterfly Association) JULY, 2021

WEB SITE: <http://www.naba.org/chapters/nabawba/>

Field Trips are free and open to the public. (Mark your calendar!)

## 1 NEXT FIELD TRIPS

### BUTTERFLIES AND FLOWERS OF KALSCHUR OAK SAVANNAH

Saturday, July 31, 2021

10:00 a.m. to noon.

We will explore this diverse area. Kalschur is owned by The Prairie Enthusiasts. It encompasses 19 acres and has a wide diversity of habitats with a cold water stream, wet meadow and wet prairie to dry prairie, oak savanna and oak woodland. It has 243 native plant species. We expect to find Swallowtails, Fritillaries and many other species of butterfly. Leaders are **Fred Dike** (SWBA) and **Rich Henderson** (TPE)



Giant Swallowtail

Bring binoculars for butterfly viewing (the closer they can focus the better). We have a few extra binoculars. Wear long pants and a hat for protection from the sun. Wear sturdy walking shoes and bring water. The property is hilly. This is a joint trip of the Southern Wisconsin Butterfly Association (SWBA) and The Prairie Enthusiasts (TPE). Contact Karl Legler at 608 228-0743 only if you have a question about the trip, or if the weather is questionable.

**DIRECTIONS:** Meet at 10:00 a.m. in Iowa County, on County K, 2 miles south of the village of Hollandale.

\*\*\*\*\*

#### IN THIS ISSUE:

1. Field Trips:
  - Kalschur Oak Savannah.
  - Lower Wisconsin State Riverway.
2. Recent Butterfly Sightings!
3. 25th Texas Butterfly Festival.

## BUTTERFLIES OF THE AVOCA / BLUE RIVER AREA

Saturday, August 7, 2021

10:30 a.m.- 4 p.m.

In some years this can be the best butterfly trip of the year! This trip will highlight several areas in the **Lower Wisconsin State Riverway**, including Avoca Prairie and Savanna State Natural Area in Iowa County, and Blue River unit in Grant County. Leader is **butterfly expert, Mike Reese**. We expect to see late butterflies and several unusual southern immigrants. A hat and long pants are recommended. Bring water, a



Common Sootywing.

lunch, and binoculars (the closer they focus the better). A few extra binoculars are available. Call Karl Legler at (608) 228-0743 only if you have a question about the trip, or if the weather is questionable. Meet at 10:30 a.m. Allow 50 minute travel time from Middleton.

**DIRECTIONS:** Take Hwy 14 west to Lone Rock, south on Hwy 130 then turn right on Hwy 133. Go west about 5.0 miles, turn right on Hay Road, and drive north to the first parking area.



Eastern Tiger Swallowtail

---

---

## 2 BUTTERFLIES REPORTED ON [wisconsinbutterflies.org](http://wisconsinbutterflies.org)

Notable recent sightings have been:

1) **REGAL FRITILLARY** photographed at Holy Wisdom Prairie July 23. The Regal Fritillary is an Endangered Species in Wisconsin and one of Wisconsin's most beautiful butterflies! Such isolated appearances of a Regal in prairie areas, that it hasn't been seen in previously, occasionally happens. Typically they emerged at some other site and have wandered. In such cases it is worth noting the gender of the butterfly. Because, IF it were a female, then there is the possibility that she may have



The female Regal Fritillary has two rows of spots (both rows white) on the hind wing.

laid eggs in the prairie area (on or near violets). And indeed this Regal was a female. So it would be worthwhile to check for any Regal Fritillaries at this spot during next year's flight period (July-early August, 2022).

2) **CALIFORNIA TORTOISESHELL** observed at Retzer Nature Center in Waukesha County on July 17. This is a very rare stray from the far West. It can stray to North Dakota, Wisconsin, Illinois, to Pennsylvania. It overwinters as an adult butterfly. There are very few records for Wisconsin. Probably the migration has been prompted by the extreme drought (and fires) in the West. Butterflies tend to move away from drought areas.



Keep sending reports to [www.wisconsinbutterflies.org](http://www.wisconsinbutterflies.org)

---

---

## 3 2021 25th Annual TEXAS BUTTERFLY FESTIVAL

SATURDAY, OCTOBER 30 - TUESDAY, NOVEMBER 2, 2021



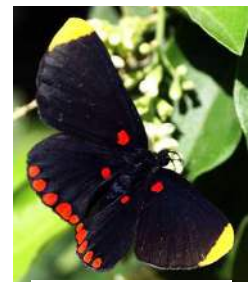
This is the premier butterfly event in the country. It is run by **NABA's National Butterfly Center** in Mission, Texas. The million-dollar building was opened in 2010. NABA's purpose in acquiring the 100 acre property adjacent to the Rio Grande River and Bentsen State Park was to preserve a superlative site for butterflying. It is located in the southern-most tip of Texas, in the Lower Rio Grande Valley (LRGV - an area about 120 miles long by 20 miles wide) which is the most productive butterfly-finding area in the United States. The climate with mild winters results in a rich diversity of plants and animals with a southern affinity, many of which do not occur farther north.



Long-tailed Skipper

The LRGV is home to more than 1,200 different species of plants, 500 species of birds, 200 vertebrate species, roughly 300 species of butterflies, and over 90 species of dragonflies!

Attendees will spend 3 days exploring renowned public lands and private properties with world-class trip leaders and expert guides. The Festival is taking place during prime



Red-bordered Pixie

butterfly season, when you may reasonably expect to see more than 60 species in a day. COST IS \$325 PER PERSON.

Proceeds from the Butterfly Festival go to NABA's National Butterfly Center.

**FOR MORE INFORMATION OR TO REGISTER, GO TO THE WEBSITE:**

**<http://www.texasbutterflyfestival.com/>**

---

---

**The ButterFlyer flits to you every month in summer. The next issue will be in AUGUST, 2021.**

**Officers of SWBA:**

President: Dr. Douglas Buege

[djbuege@gmail.com](mailto:djbuege@gmail.com)

Vice-President: Karl Legler

[karlndot@charter.net](mailto:karlndot@charter.net)

Secretary: Dorothy Legler

Treasurer: Fred Dike

\*\*\*\*\*

**Other SWBA contributors:**

e-Newsletter Editor: Karl Legler

[karlndot@charter.net](mailto:karlndot@charter.net)

Webmaster: Karl Legler

Butterfly Reporting: Mike Reese at

[www.wisconsinbutterflies.org](http://www.wisconsinbutterflies.org)

Speaker's Bureau: Dorothy Legler

Dr. Douglas Buege

NABA Liaison: Joan Braune

**SWBA**

The Southern Wisconsin Butterfly Association (SWBA) is a non-profit Wisconsin chapter of the North American Butterfly Association (NABA) which is the largest organization of people interested in butterflies. SWBA promotes public awareness, conservation and the enjoyment of butterflies through observation with close-focusing binoculars, chapter field trips, educational meetings, photography, butterfly gardening, monitoring and travel. SWBA's events are open to the public.

To become a member of SWBA simply join NABA. Membership benefits include 2 color quarterly magazines "American Butterflies" and "Butterfly Gardening". Please use the membership form on the SWBA Web site at <http://www.naba.org/chapters/nabawba/>

Our e-Newsletter, the Badger ButterFlyer, will be published monthly in spring to fall.

Send any news notes to the editor, Karl Legler, at [karlndot@charter.net](mailto:karlndot@charter.net)

**To stop receiving this e-Newsletter simply send an email to the above editor's address.**